

WAAS CH <b>40313</b> <b>W01B</b>	APP CRS <b>006°</b>	Rwy Idg <b>5930</b> TDZE <b>17</b> Apt Elev <b>36</b>
--	------------------------	---

RNAV (GPS) Z RWY 1L

NAPA COUNTY (APC)

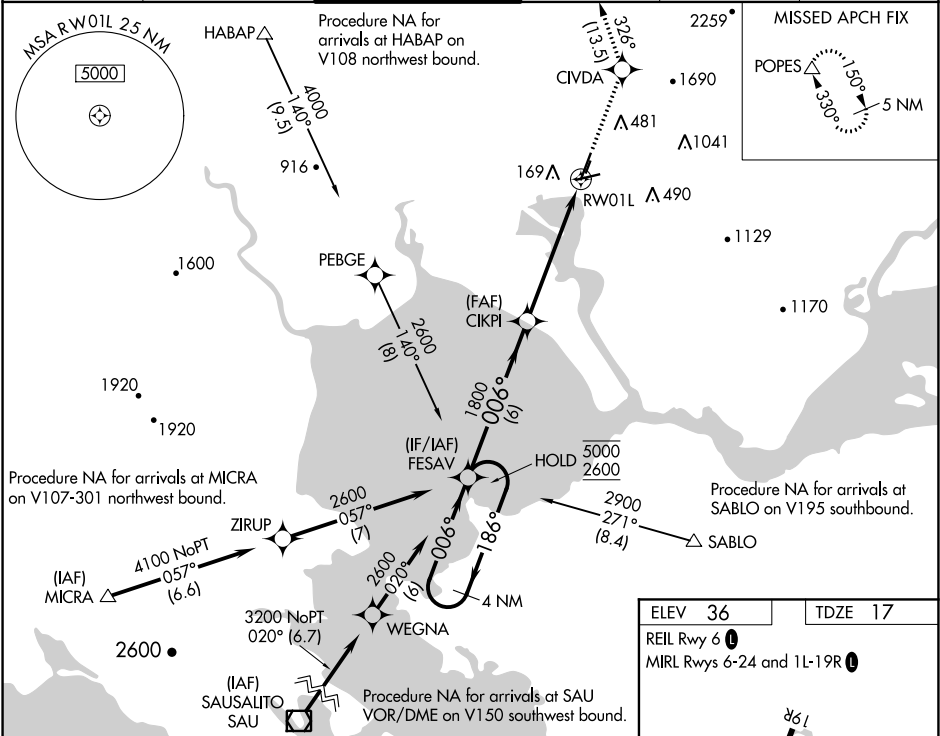
RNP APCH.

▼ For uncompensated Baro-VNAV systems, LNAV/VNAV NA below -4°C or above 54°C. Inop table does not apply to LPV minimums. For inop ALS, increase visibility LNAV/VNAV to ½ SM. Missed approach requires minimum climb of 420 feet per NM to 2200. If unable to meet climb gradient see RNAV (GPS) Y RWY 1L.

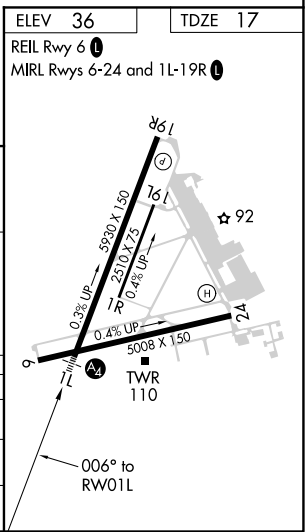
MALS  
A2

MISSED APPROACH: Climb to 5000 direct CIVDA and on track 326° to POPES and hold, continue climb-in-hold to 5000.

ATIS <b>124.05</b>	OAKLAND CENTER <b>127.8 353.5</b>	NAPA TOWER ★ <b>118.7 (CTAF) 0 257.8</b>	GND CON <b>121.7</b>	CLNC DEL <b>127.85</b>	UNICOM <b>122.95</b>
-----------------------	--------------------------------------	---	-------------------------	---------------------------	-------------------------



4 NM Holding Pattern		FESAV	CIKPI	5000	CIVDA	POPES
5000 ← 186°		2600 → 006°	1800	tr 326°		
GP 3.00° TCH 50		1800		*1.7 NM to RWY01L	*LNAV only	
		6 NM	3.8 NM	1.7 NM		
CATEGORY	A	B	C	D		
LPV DA		217-¾	200 (200-¾)			
LNAV/VNAV DA		330-¾	313 (300-¾)			
LNAV MDA	560-¾	543 (600-¾)	560-1¾	543 (600-1¾)		



SW-2, 31 DEC 2020 to 28 JAN 2021

SW-2, 31 DEC 2020 to 28 JAN 2021