

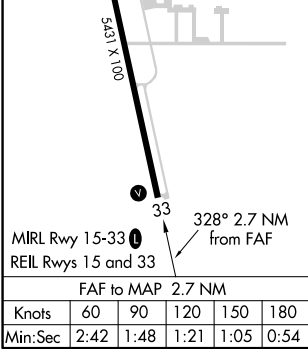
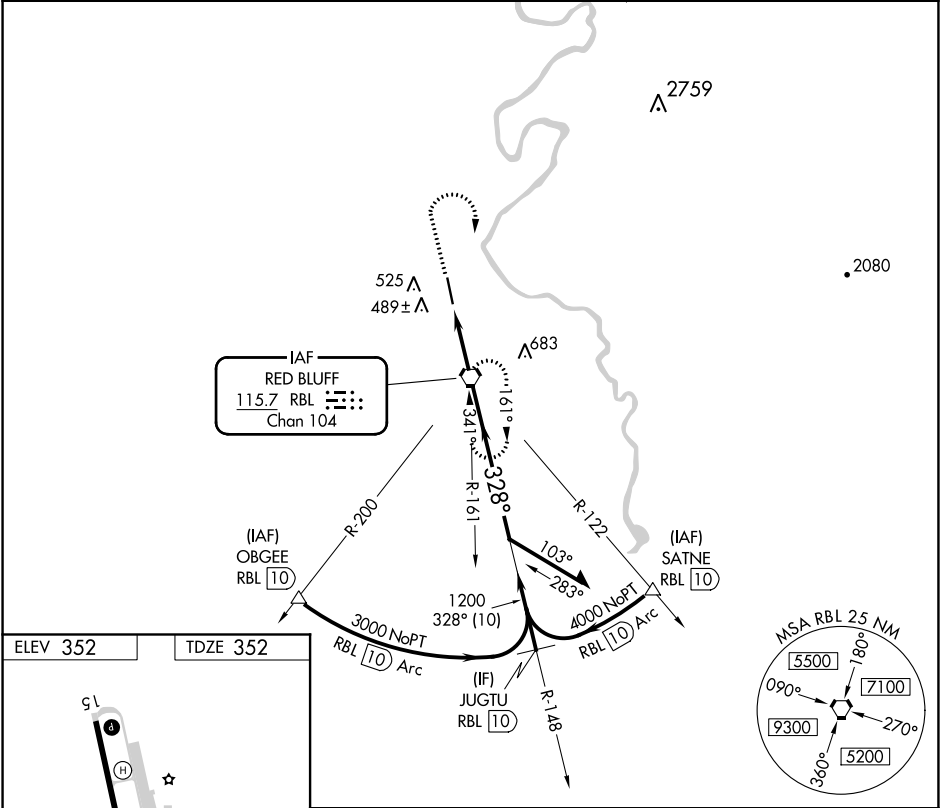
VORTAC RBL <b>115.7</b> Chan <b>104</b>	APP CRS <b>328°</b>	Rwy Idg TDZE <b>352</b> Apt Elev <b>352</b>
---	------------------------	---

VOR RWY 33  
RED BLUFF MUNI (RBL)

**⚠** When local altimeter setting not received, use Redding altimeter setting and increase all MDAs 80 feet and all Cat C/D visibilities ¼ SM.

MISSED APPROACH: Climb to 1500, then climbing right turn to 2000 direct RBL VORTAC and hold.

ASOS <b>120.775</b>	OAKLAND CENTER <b>132.2 350.3</b>	UNICOM <b>123.0 (CTAF) 0</b>
------------------------	--------------------------------------	---------------------------------



1500	2000	RBL	RBL VORTAC	2300	148°	2100	328°	1200	2.7 NM	2.83°	TCH 40	Remain within 10 NM
CATEGORY												
S-33												
740-1 388 (400-1)												
CIRCLING												
880-1 528 (600-1)												
900-1½ 548 (600-1½)												
740-1¼ 388 (400-1¼)												
1060-2¼ 708 (800-2¼)												