

SW-2, 31 DEC 2020 to 28 JAN 2021

NORCAL APP CON
127.4 317.5
ATIS
118.325
MATHER TOWER ★
120.65 282.25

(AMRV.R.AMRVR2) 18256
AMRVR TWO ARRIVAL (RNAV)

AL-356 (FAA)

SACRAMENTO MATHER (MHR)
SACRAMENTO, CALIFORNIA

NOTE: RNAV 1.
NOTE: DME/DME/IRU or GPS required.
NOTE: Turbojet aircraft only.
NOTE: RADAR required for non-GPS equipped aircraft.

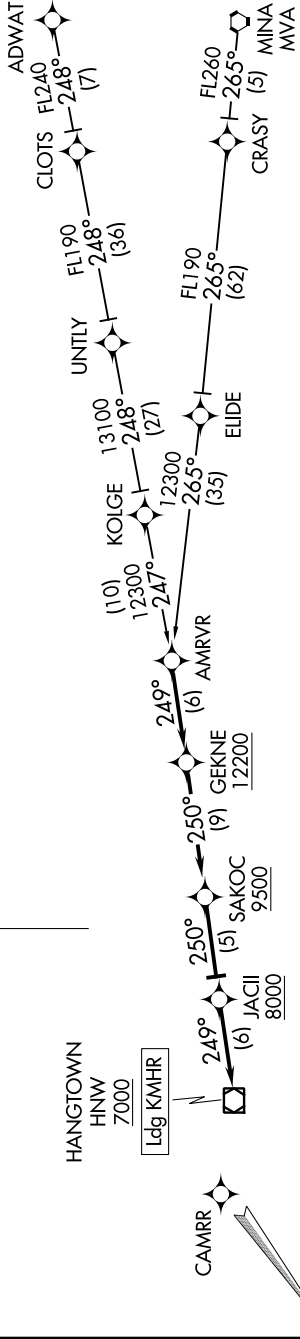


HANGTOWN
HNW
7000

Ldg KMHR



LOCALIZER 111.35
I-MHR
Chan 50(Y)



ARRIVAL ROUTE DESCRIPTION

ADWAT TRANSITION [ADWAT.AMRVR2]

MINA TRANSITION [MVA.AMRVR2]

... From AMRVR on track 249° to cross GEKNE at or above 12200, then on track 250° to cross SAKOC at or above 9500, then on track 250° to cross JACII at or above 8000, then on track 249° to cross HNW VOR/DME at or above 7000. Expect ILS approach Runway 22L or visual approach.

NOTE: Chart not to scale.

AMRVR TWO ARRIVAL (RNAV)
(AMRV.R.AMRVR2) 13SEP18

SACRAMENTO, CALIFORNIA
SACRAMENTO MATHER (MHR)

SW-2, 31 DEC 2020 to 28 JAN 2021