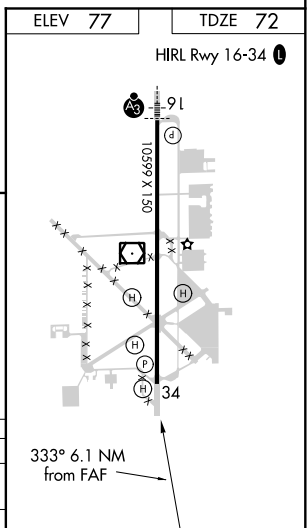
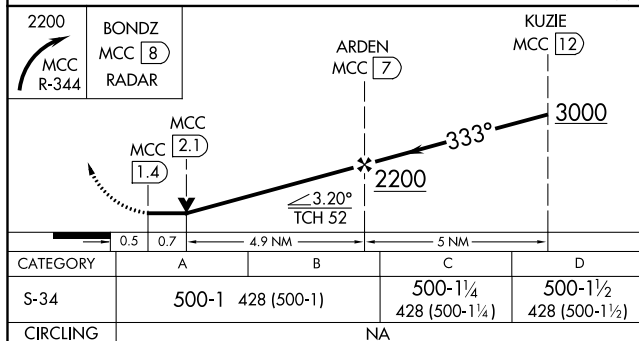
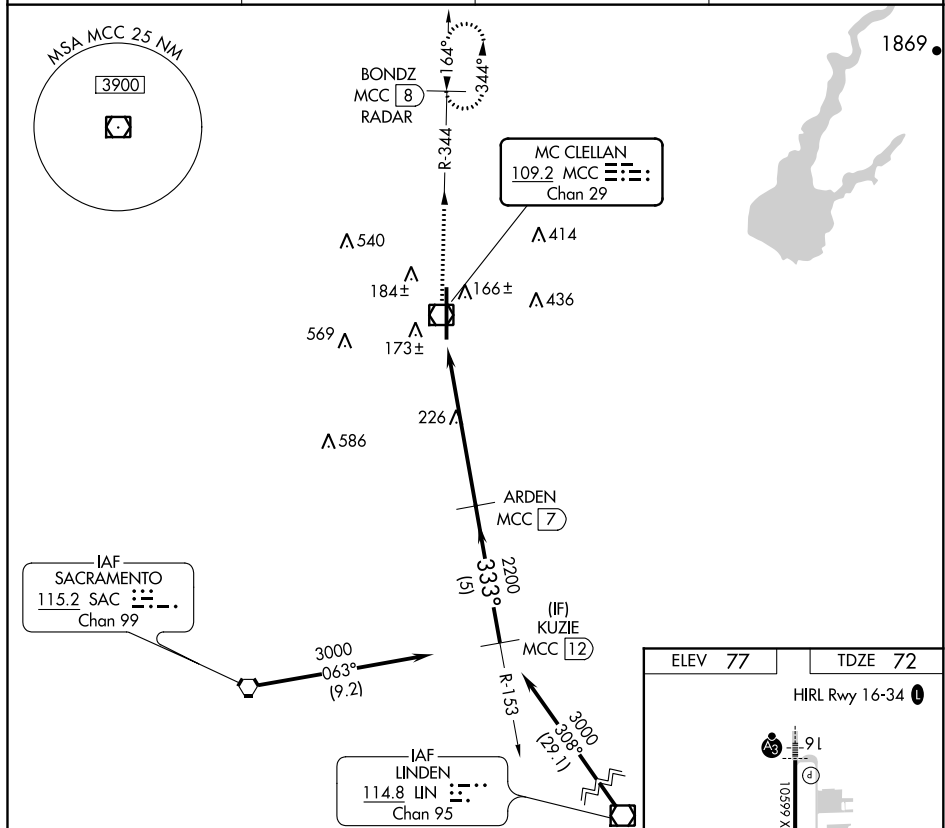


VOR/DME RWY 34  
MC CLELLAN AIRFIELD (MCC)

**MISSED APPROACH:** Climbing right turn to 2200 via MCC R-344 to BONDZ/MCC 8 DME/RADAR and hold.

AWOS-3 <b>125.975</b>	NORCAL APP CON <b>127.4 317.5</b>	CLNC DEL <b>119.825</b>	UNICOM <b>122.975 (CTAF) 0</b>
--------------------------	--------------------------------------	----------------------------	-----------------------------------



SW-2, 31 DEC 2020 to 28 JAN 2021

SW-2, 31 DEC 2020 to 28 JAN 2021