

|  |                        |   |
|--|------------------------|---|
| WAAS<br>CH <b>62810</b><br><b>W02A</b> | APP CRS<br><b>019°</b> | Rwy Idg <b>5503</b><br>TDZE <b>21</b><br>Apt Elev <b>24</b> |
|--|------------------------|---|

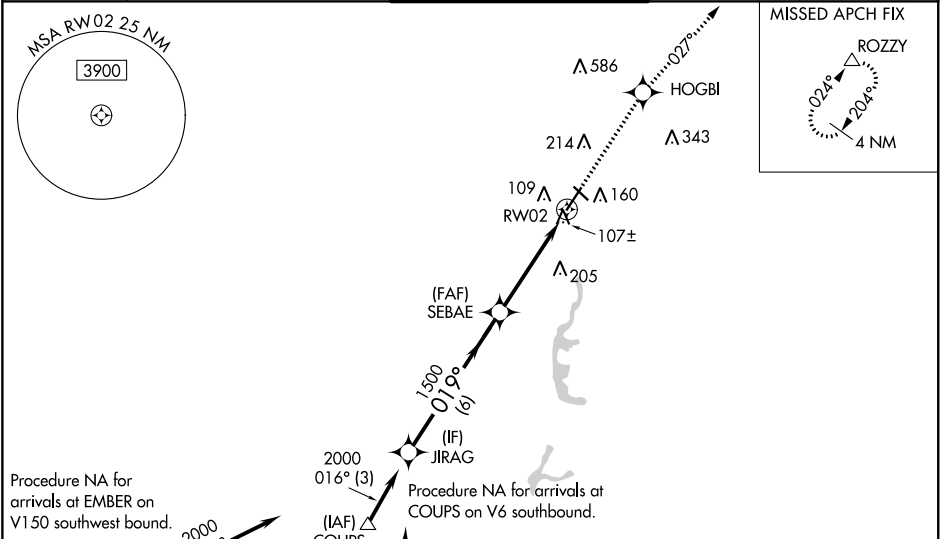
RNAV (GPS) RWY 2  
SACRAMENTO EXECUTIVE (SAC)

**⚠** Baro-VNAV NA when using Sacramento Intl altimeter setting. For uncompensated Baro-VNAV systems, LNAV/VNAV NA below -15°C (5°F) or above 54°C (130°F). DME/DME RNP-0.3 NA. When local altimeter setting not received, use Sacramento Intl altimeter setting and increase LPV DA to 322; increase LNAV/VNAV DA to 401 and all visibilities ½ mile; increase all MDA 40 feet and LNAV Cats C/D visibility ½ mile. For inop MALSR, increase LPV all Cats visibility to ¾. For inop MALSR when using Sacramento Intl altimeter setting, increase LPV all Cats visibility to 1.

**MALSR**

**MISSED APPROACH:**  
Climb to 3000 direct HOGBI and on track 027° to ROZZY and hold.

|                      |                                       |   |                         |                         |
|----------------------|---------------------------------------|---|-------------------------|-------------------------|
| ATIS<br><b>125.5</b> | NORCAL APP CON<br><b>125.25 257.9</b> | EXEC TOWER ★<br><b>119.5 (CTAF) 0 278.8</b> | GND CON<br><b>125.0</b> | UNICOM<br><b>122.95</b> |
|----------------------|---------------------------------------|---|-------------------------|-------------------------|



|  |                      |                      |                        |                      |  |        |  |
|--|----------------------|----------------------|------------------------|----------------------|--|--------|--|
| (IAF) EMBER<br>0500<br>(10.7)                              |                      | COUPS                |                        | 2000<br>348° (9.9)   |  | A 2030 |  |
| Procedure NA for arrivals at VISTO on V334-392 southbound. |                      | (IAF) VISTO          |                        | 3000                 |  | HOGBI  |  |
| JIRAG  |                      | SEBAE                |                        | 027° tr              |  | ROZZY  |  |
| 2000   |                      | 1500                 |                        | RW02                 |  |        |  |
| GP 3.00°<br>TCH 57   |                      | 1500                 |                        | 6 NM                 |  | 4.4 NM |  |
| CATEGORY   | A                    | B                    | C                      | D                    |  |        |  |
| LPV DA   | 294-½                |                      | 273 (300-½)            |                      |  |        |  |
| LNAV/VNAV DA   | 373-⅝                |                      | 352 (400-⅝)            |                      |  |        |  |
| LNAV MDA   | 440-½ 419 (500-½)    |                      | 440-¾ 419 (500-¾)      |                      |  |        |  |
| CIRCLING   | 500-1<br>476 (500-1) | 520-1<br>496 (500-1) | 520-1½<br>496 (500-1½) | 580-2<br>556 (600-2) |  |        |  |

ELEV 24 TDZE 21

REIL Rwy 12, 20 and 30  
MIRL Rwy 2-20 and 12-30

A 79± A 85± A 87±

TWR 94

A 183

5033 X 150

100±

61± A

A 76±

A 61±

019° to RW02

SW-2, 31 DEC 2020 to 28 JAN 2021

SW-2, 31 DEC 2020 to 28 JAN 2021