

LOC I-SNS <u>108.5</u>	APP CRS 311°	Rwy Idg 4825 TDZE 82 Apt Elev 85
----------------------------------	------------------------	---

ILS RWY 31
SALINAS MUNI (SNS)

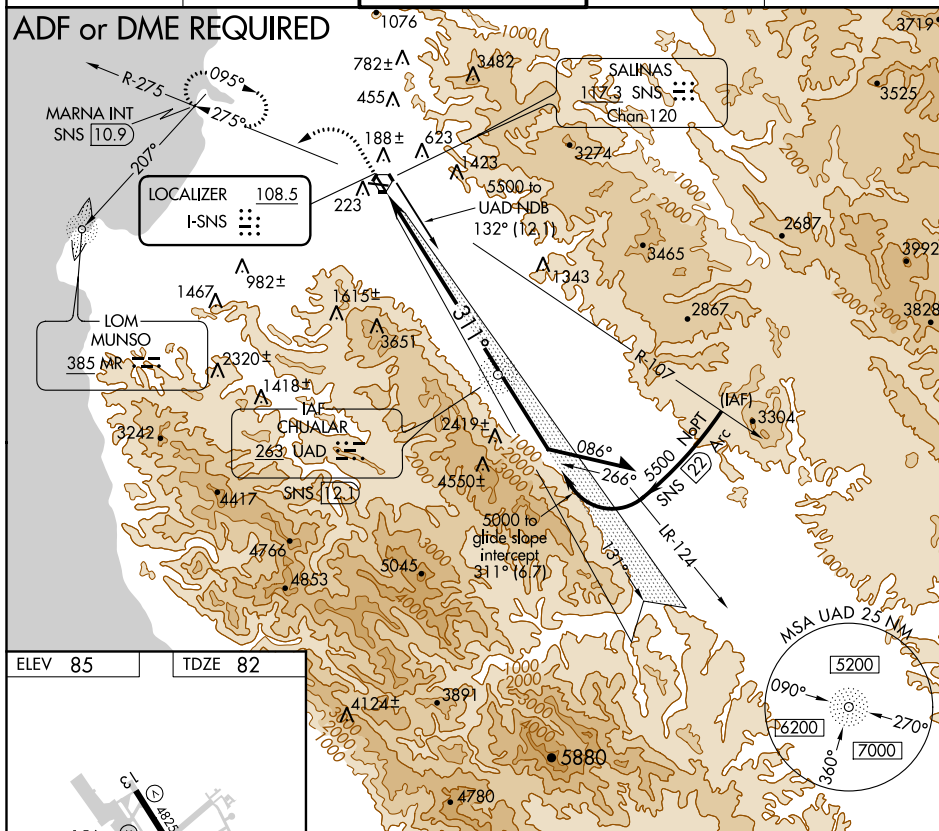
T When local altimeter setting not received, use
A Monterey Rgnl altimeter setting and increase
S-ILS 31 DA 53 feet.



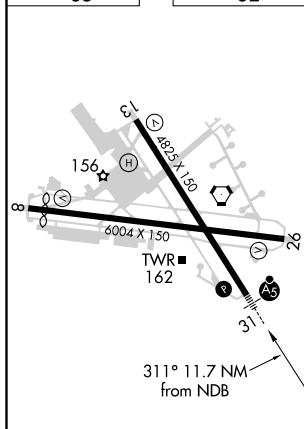
MISSED APPROACH: Climb to 800 then climbing left turn to 3000 via SNS R-275 to MARNA INT/10.9 DME and hold.

ATIS 124.85	NORCAL APP CON 133.0 251.15	SALINAS TOWER ★ 119.525 (CTAF) 0 239.3	GND CON 121.7	UNICOM 122.95
-----------------------	---------------------------------------	--	-------------------------	-------------------------

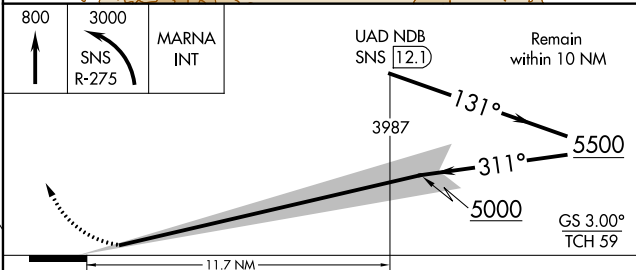
ADF or DME REQUIRED



ELEV 85		TDZE 82
---------	--	---------



HIRL Rwy 13-31 **L**
MIRL Rwy 8-26 **L**
REIL Rwy 13 and 26 **L**



CATEGORY	A	B	C	D
S-ILS 31	282/24 200 (200-1/2)			