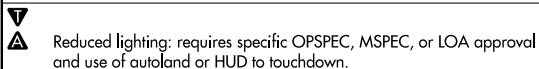
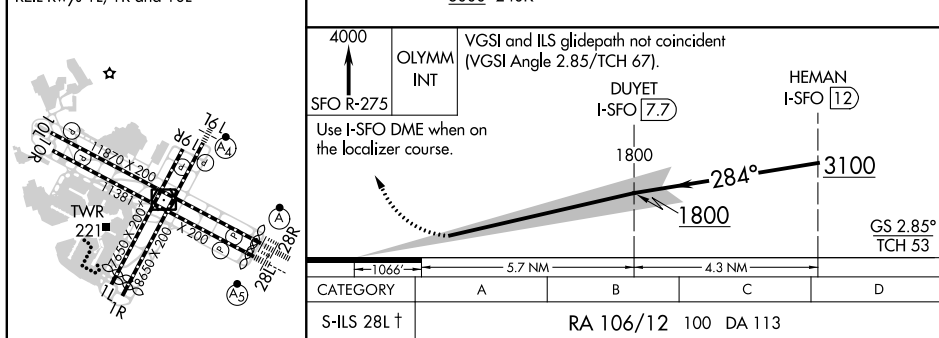
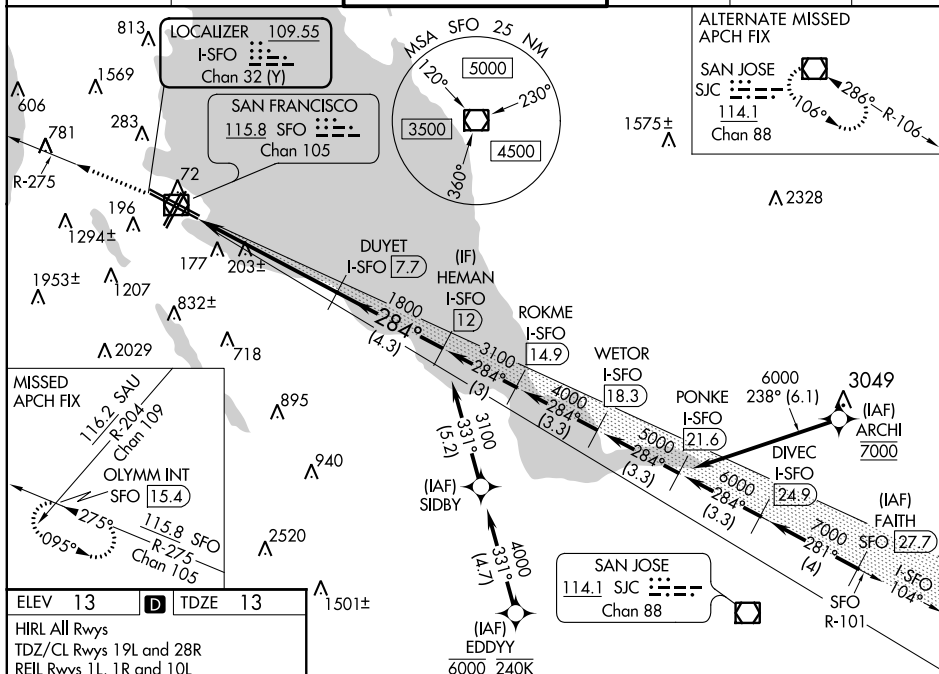


ILS RWY 28L (SA CAT II)
SAN FRANCISCO INTL (SFO)

MISSED APPROACH: Climb to 4000 on SFO VOR/DME R-275 to OLYMM INT/ SFO 15.4 DME and hold, continue climb-in-hold to 4000.



D-ATIS 113.7 115.8 118.85	NORCAL APP CON 134.5 338.2	SAN FRANCISCO TOWER 120.5 269.1	GND CON 121.8	CLNC DEL 118.2	CPDLC
---------------------------------	-------------------------------	------------------------------------	------------------	-------------------	-------



SA CAT II ILS - SPECIAL AIRCREW AND AIRCRAFT CERTIFICATION REQUIRED

SW-2, 31 DEC 2020 to 28 JAN 2021