

ILS or LOC RWY 19L
SAN FRANCISCO INTL (SFO)

MISSED APPROACH: Climb to 520 then climbing left turn to 4000 on SFO VOR/DME R-101 to DUMBA INT/SFO 15 DME and hold.

SAN JOSE
SJC 114.1 MHz
Chan 88

ALTERNATE
MISSED
APCH FIX

MSA SFO 25 NM

5000
3500
4500

2600

120° 230° 360°

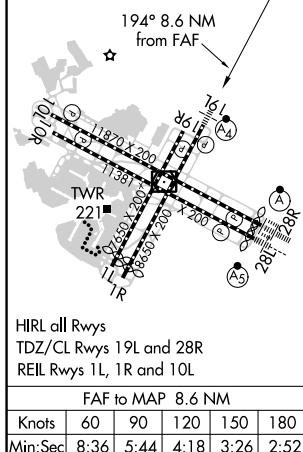
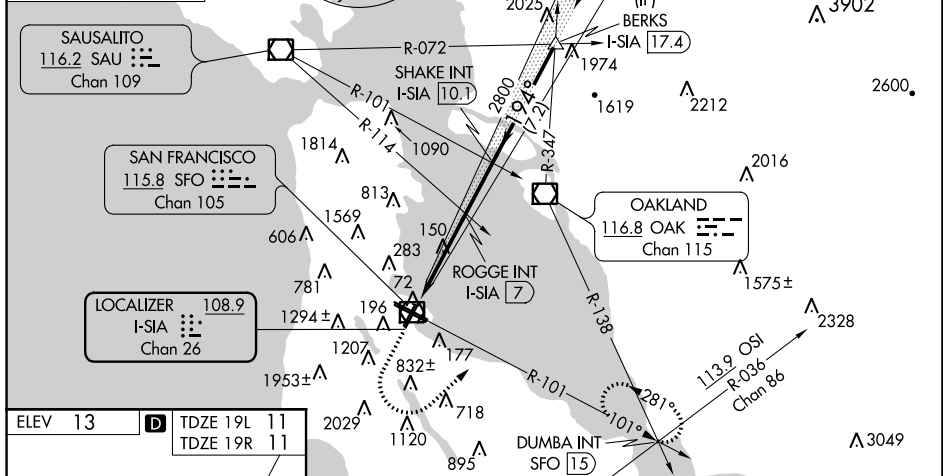
R-107
R-106
R-108

112.1 SGD
Chan 58

5000
236° (2.6)

(IAF)
UPEND INT
I-SIA (29)

CONCORD
117.0 CCR
Chan 117



VGS1 and ILS glidepath not coincident
(VGS1 Angle 3.00/TCH 71).

5000

GS 3.00°
TCH 55

194°

2800

1800*

2800

1 NM

4.5 NM

3.1 NM

7.2 NM

I-SIA 1.5

I-SIA 2.5

I-SIA 7

I-SIA 10.1

I-SIA 17.4

DUMBA INT

ROGGE INT

SHAKE INT

BERKS INT

SFO R-101

*LOC only

SW-2, 31 DEC 2020 to 28 JAN 2021

SW-2. 31 DEC 2020 to 28 JAN 2021