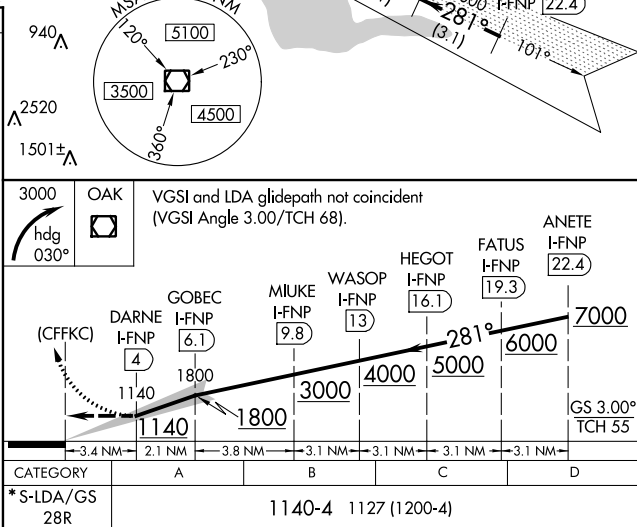


LDA/DME RWY 28R
SAN FRANCISCO INTL (SFO)

MISSED APPROACH: Climbing right turn to 3000 on heading 030° then direct OAK VOR/DME and hold.

[illegible]

RADAR AND
DME REQUIRED
LDA/GLIDESLOPE



SW-2, 31 DEC 2020 to 28 JAN 2021