

WAAS CH <b>53533</b> <b>W19B</b>	APP CRS <b>194°</b>	Rwy Idg <b>7650</b> TDZE <b>11</b> Apt Elev <b>13</b>
--	------------------------	---

RNAV (GPS) RWY 19R  
SAN FRANCISCO INTL (SFO)

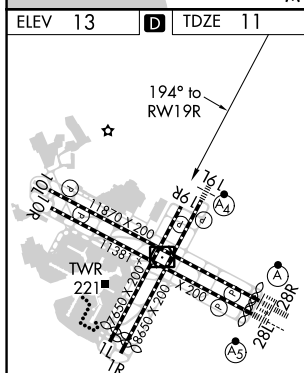
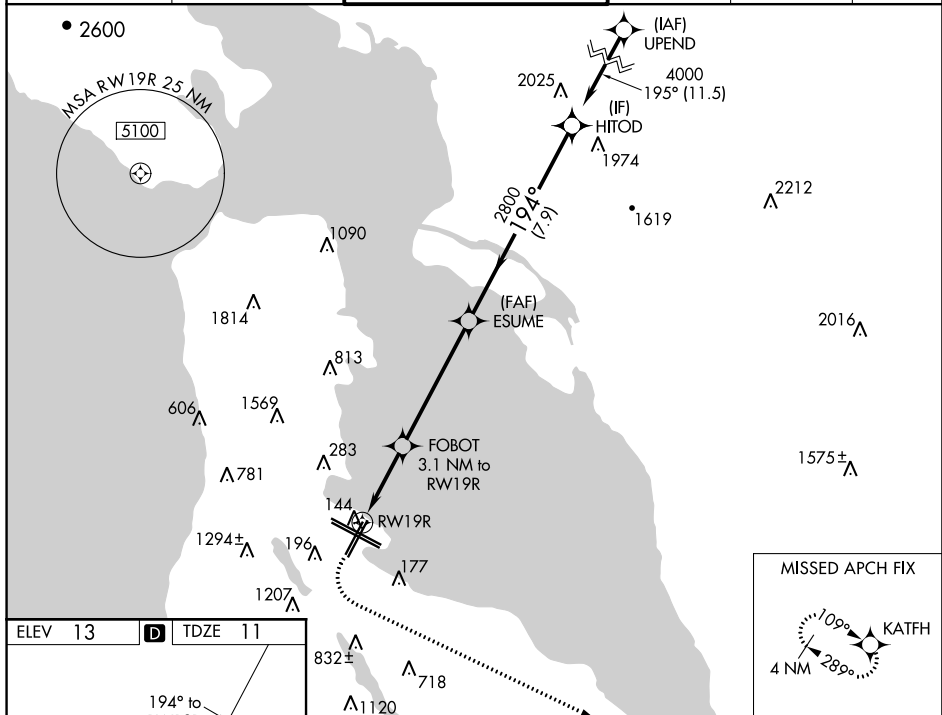
SAN FRANCISCO INTL (SFO)

RNP APCH.


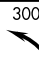

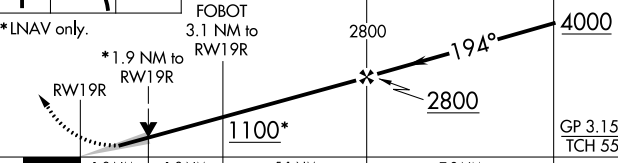
**T** LNAV procedure NA during simultaneous operations. For uncompensated Baro-VNAV systems, LNAV/VNAV NA below 3°C or above 42°C. Simultaneous approach authorized. Simultaneous operations require use of vertical guidance; maintain last assigned altitude until established on glidepath. Simultaneous approach NA below 28°C (52°F).

**MISSED APPROACH:** Climb to 600 then climbing left turn to 3000 direct KATFH and hold.

D-ATIS <b>113.7 115.8 118.85</b>	NORCAL APP CON <b>134.5 338.2</b>	SAN FRANCISCO TOWER <b>120.5 269.1</b>	GND CON <b>121.8</b>	CLNC DEL <b>118.2</b>	CPDLC
---	--------------------------------------	---	-------------------------	--------------------------	-------



TDZ/CL Rwy 19L and 28R  
REIL Rwy 1L, 1R and 10L  
HIRL all Rwy

  					
*NAV only.		FOBOT 3.1 NM to RW19R *1.9 NM to RW19R 1100* ESUME 2800 HITOD 4000 GP 3.15° TCH 55			
CATEGORY		A	B	C	D
LPV DA		382/55 371 (400-1)			
LNAV/VNAV DA		449-1¼ 438 (500-1¼)			
LNAV MDA		660/55	649 (700-1)	660-1⅞	649 (700-1⅞)

## RNAV (GPS) RWY 19R