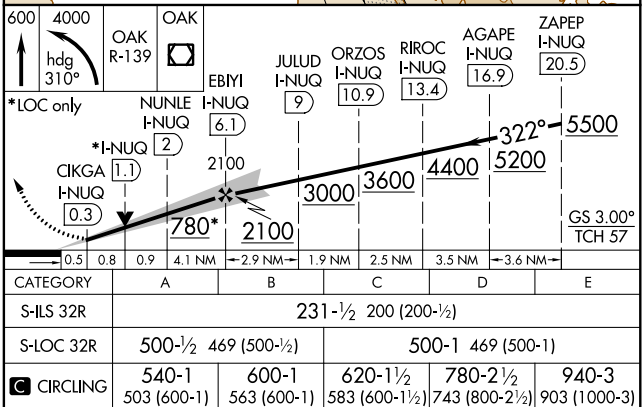
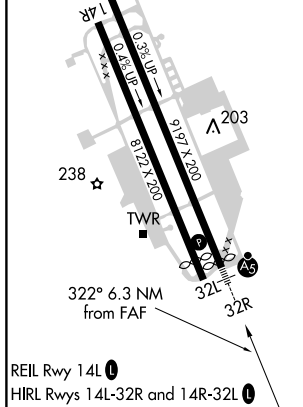
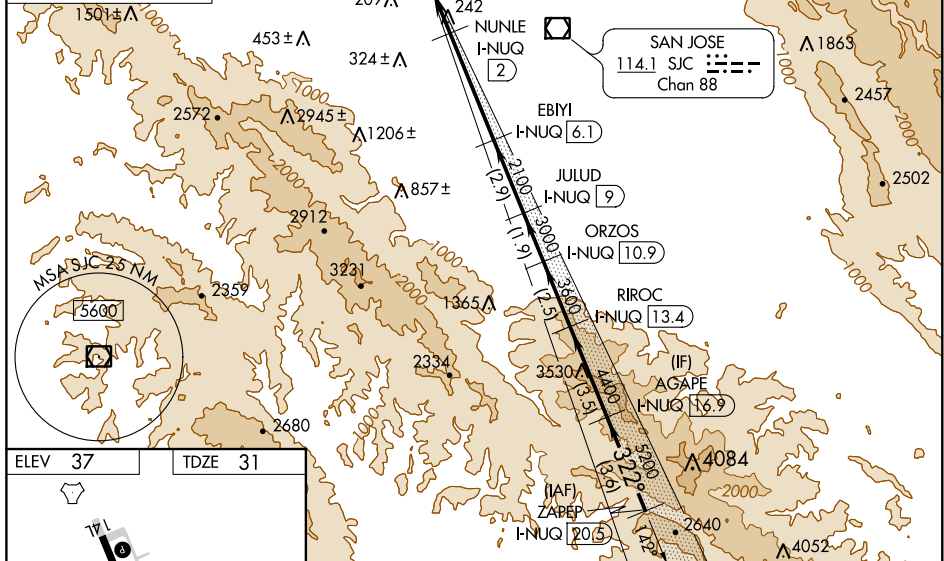


ILS or LOC RWY 32R
MOFFETT FEDERAL AFLD (NUQ)

MISSED APPROACH: Climb to 600 then climbing left turn to 4000 on heading 310° and on OAK VOR/DME R-139 to OAK VOR/DME and hold.



SW-2, 31 DEC 2020 to 28 JAN 2021