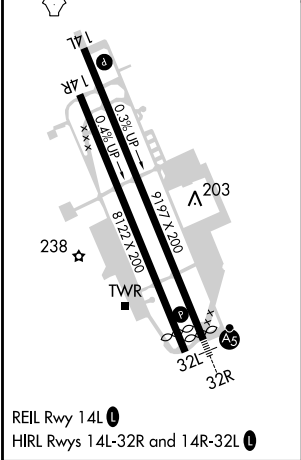
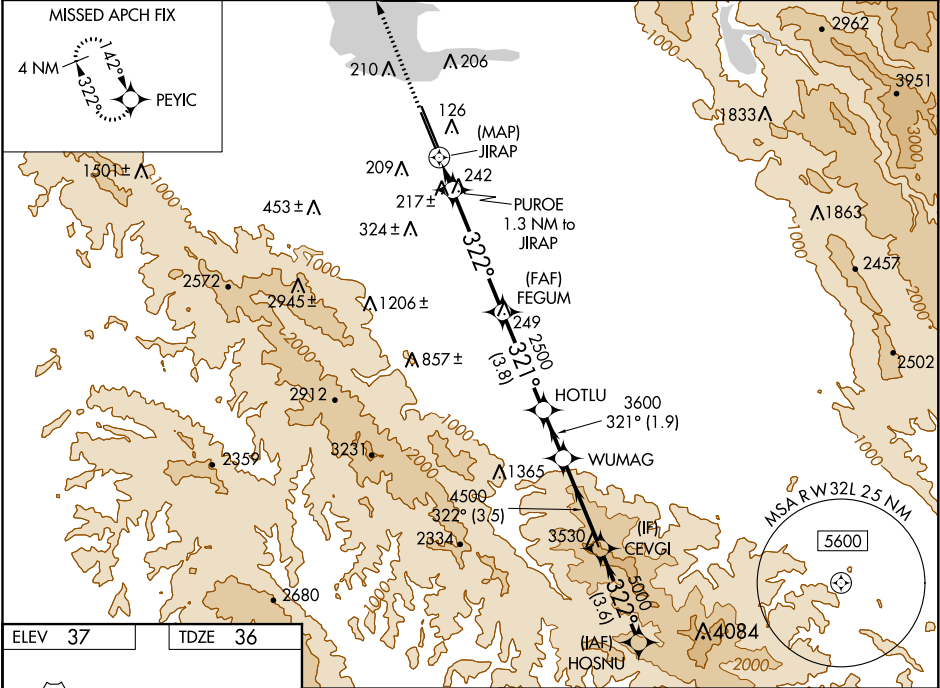


WAAS CH <b>50242</b> <b>W32A</b>	APP CRS <b>322°</b>	Rwy Idg TDZE Apt Elev	<b>7520</b> <b>36</b> <b>37</b>
--	------------------------	-----------------------------	---------------------------------------

RNAV (GPS) RWY 32L  
MOFFETT FEDERAL AFLD (NUQ)

RNP APCH. Rwy 32L helicopter visibility reduction below ¾ SM NA. For uncompensated Baro-VNAV systems, LNAV/VNAV NA below 0°C or above 47°C.	MISSED APPROACH: Climb to 3200 direct PEYIC and hold.
--	---

ATIS <b>124.175 283.0</b>	NORCAL APP CON <b>120.1 290.25</b>	MOFFETT TOWER ★ <b>119.55 (CTAF) 259.65</b>	GND CON <b>121.85 278.95</b>	CLNC DEL <b>296.75</b>
------------------------------	---------------------------------------	--	---------------------------------	---------------------------



3200	PEYIC	HOSNU
* LNAV only	PUROE 1.3 NM to JIRAP	FEGUM
JIRAP	HOTLU	WUMAG
CEVGI	5500	5000
740*	322°	321°
3600	4500	5000
0.5	1.3	4.7 NM
3.8 NM	1.9 NM	3.5 NM
3.6 NM		
CATEGORY	A	B
LPV DA	337-7/8	301 (300-7/8)
LNAV/VNAV DA	421-1 1/8	385 (400-1 1/8)
LNAV MDA	480-1 444 (500-1)	480-1 3/8 444 (500-1 3/8)
CIRCLING	540-1 503 (600-1)	600-1 563 (600-1)
	620-1 1/2 583 (600-1 1/2)	780-2 1/4 743 (800-2 1/4)