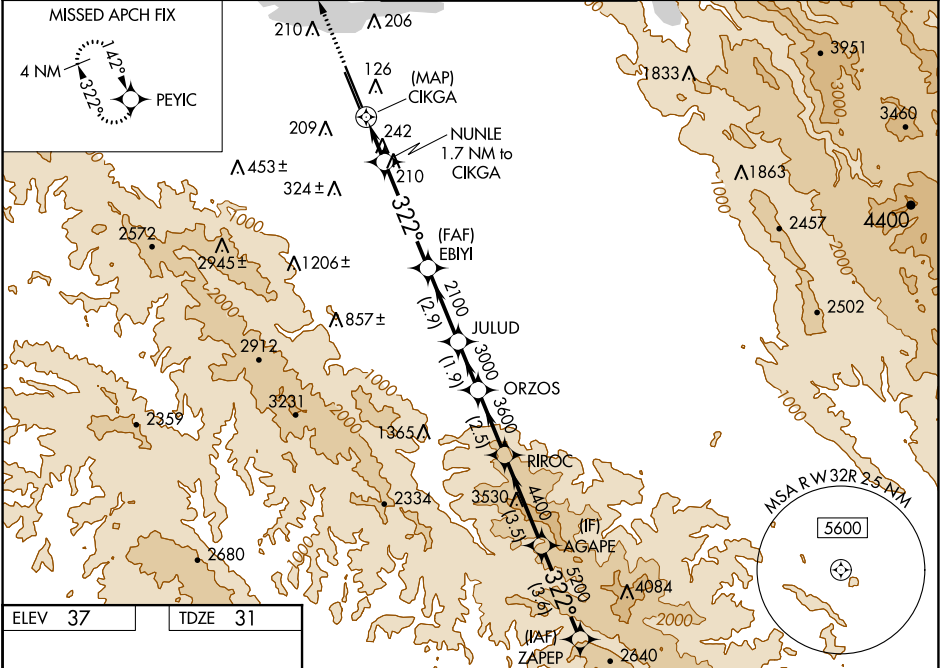


WAAS CH <b>53343</b> <b>W32B</b>	APP CRS <b>322°</b>	Rwy Idg TDZE Apt Elev	<b>9006</b> <b>31</b> <b>37</b>
--	------------------------	-----------------------------	---------------------------------------

RNAV (GPS) RWY 32R  
MOFFETT FEDERAL AFLD (NUQ)

RNP APCH. ▼ For uncompensated Baro-VNAV systems, LNAV/VNAV NA below 0°C or above 54°C. For inop ALS, increase LNAV/VNAV all Cats visibility to 1½ SM and LNAV Cat C/D visibility to 1½ SM. ▲	MALSR A5	MISSED APPROACH: Climb to 3200 direct PEYIC and hold.
--	-------------	--

ATIS <b>124.175 283.0</b>	NORCAL APP CON <b>120.1 290.25</b>	MOFFETT TOWER ★ <b>119.55 0 (CTAF) 259.65</b>	GND CON <b>121.85 278.95</b>	CLNC DEL <b>296.75</b>
------------------------------	---------------------------------------	--	---------------------------------	---------------------------



ELEV 37	TDZE 31
REIL Rwy 14L HIRL Rws 14L-32R and 14R-32L	
3200 PEYIC	
* LNAV only	
* 0.8 NM to CIKGA	
CIKGA	
NUNLE 1.7 NM to CIKGA	
EBIYI 2100	
JULUD 3000	
ORZOS 3600	
RIROC 4400	
AGAPE 5200	
ZAPEP 5500	
GP 3.00°	
TCH 57	
CATEGORY	A B C D
LPV DA	231-½ 200 (200-½)
LNAV/VNAV DA	442-¾ 411 (500-¾)
LNAV MDA	500-½ 469 (500-½) 500-1 469 (500-1)
CIRCLING	540-1 503 (600-1) 600-1 563 (600-1) 620-1½ 583 (600-1½) 780-2½ 743 (800-2½)

SW-2, 31 DEC 2020 to 28 JAN 2021

SW-2, 31 DEC 2020 to 28 JAN 2021