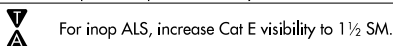


TACAN RWY 32R  
MOFFETT FEDERAL AFLD (NUQ)

**MISSED APPROACH:** Climb to 3200 on NUQ TACAN R-321 to PEYIC/16 DME and hold.



**MISSED ARCH FIX**

**PEYIC**  
NUQ **16**

**MOFFETT**  
Chan 123  
NUQ **117.6**

**DIYEB**  
NUQ **2.2**

**CENIL**  
NUQ **3.5**

**EKECE**  
NUQ **8.3**

**JOVDA**  
NUQ **10.2**

**RURSE**  
NUQ **13.9**

**CEYGI**  
NUQ **12.4**

**HOSNU**  
NUQ **2**

**MSA NUQ 25 NM**

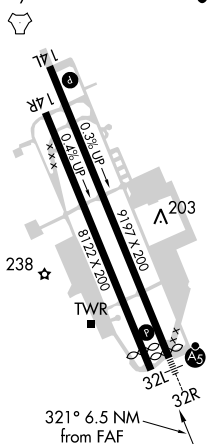
**ELEV 37** **TDZE 31**

**REIL Rwy 14L**

**HIRL Rws 14L-32R and 14R-32L**

**REIL Rwy 14L**

REIL Rwy 14L **L**  
HIRL Rwy 14L-32R and 14R-32L **L**



3200 ↑ NUQ R-321	PEYIC NUQ 16	VGSI and descent angles not coincident (VGSI Angle 3.00/TCH 55).			CEVGI NUQ 17.4	HOSNU NUQ 21
0.5    1.3 NM    4.8 NM    1.9 NM    3.8 NM    3.4 NM    3.6 NM						
CATEGORY	A		B	C	D	E
S-32R	560-1/2    529 (600-1/2)		560-1    529 (600-1)			
<b>C</b> CIRCLING	560-1 523 (600-1)	600-1 563 (600-1)	620-1 1/2 583 (600-1 1/2)	780-2 1/2 743 (800-2 1/2)	940-3 903 (1000-3)	