

RNAV (GPS) RWY 21R

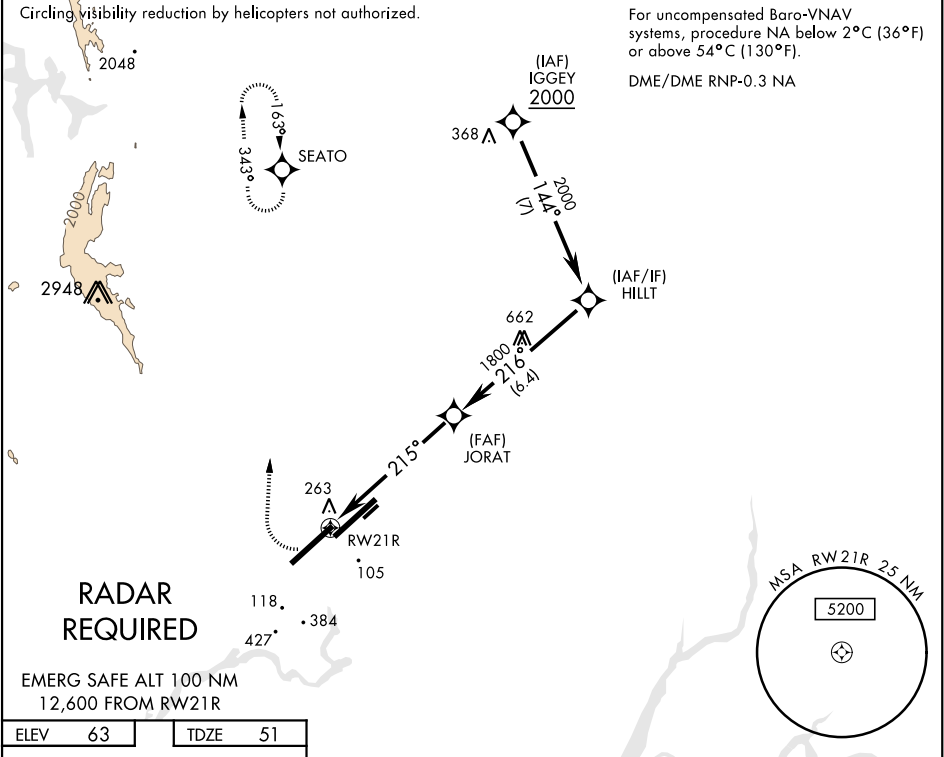
WAAS CH 71276 W21B	APCH CRS 215°	Rwy Idg 11,001 TDZE 51 Arpt Elev 63
--	-------------------------	--

AL-488 [USAF]

TRAVIS AFB (KSUU)

▼ * When Rwy 3R VGSI inop, circling to Rwy 3R not authorized at night. Circling not authorized NW of Rwy 3L-21R.	MISSED APPROACH: Climb to 2100 then climbing right turn to 4400 direct SEATO and hold, continue climb-in-hold to 4400.
---	--

ATIS 135.55 292.125	TRAVIS APP CON 119.9(S) 126.6(N) 281.45	TRAVIS TOWER 120.75 254.4	GND CON 121.8 289.4	CLNC DEL 127.55 335.8
-------------------------------	---	-------------------------------------	-------------------------------	---------------------------------



2100 4400 SEATO VGSI and RNAV glidepath not coincident (VGSI angle 2.80° TCH 75) HILLT 2000

215° to RWY 21R 263 171 TWR 209 132 74 11,000 x 300 3R 032°- 212° 212° 032°- 212° 1.4 NM to RWY 21R JORAT 216° 1800 6.0 NM GP 2.67° TCH 52

MIRL Rwy 032°- 212°
TDZL/CL Rwy 3R-21L
HIRL Rwy 3L-21R, 3R-21L

CATEGORY	A	B	C	D	E
LPV DA	301-1		250	(300-1)	
LNNAV/VNAV DA	475-1½		424	(500-1½)	
LNNAV MDA	540-1	489 (500-1)	540-1¾	489	(500-1¾)
CIRCLING *	540-1 477 (500-1)	580-1 517 (600-1)	1100-3 1037 (1100-3)	1200-3	1137 (1200-3)

RNAV (GPS) RWY 21R