

TACAN RWY 21L

TACAN SUU Chan 113	APCH CRS 209°	Rwy Idg 10,995 TDZE 58 Arpt Elev 63
-----------------------	------------------	---

AL-488 [USAF]

TRAVIS AFB (KSUU)

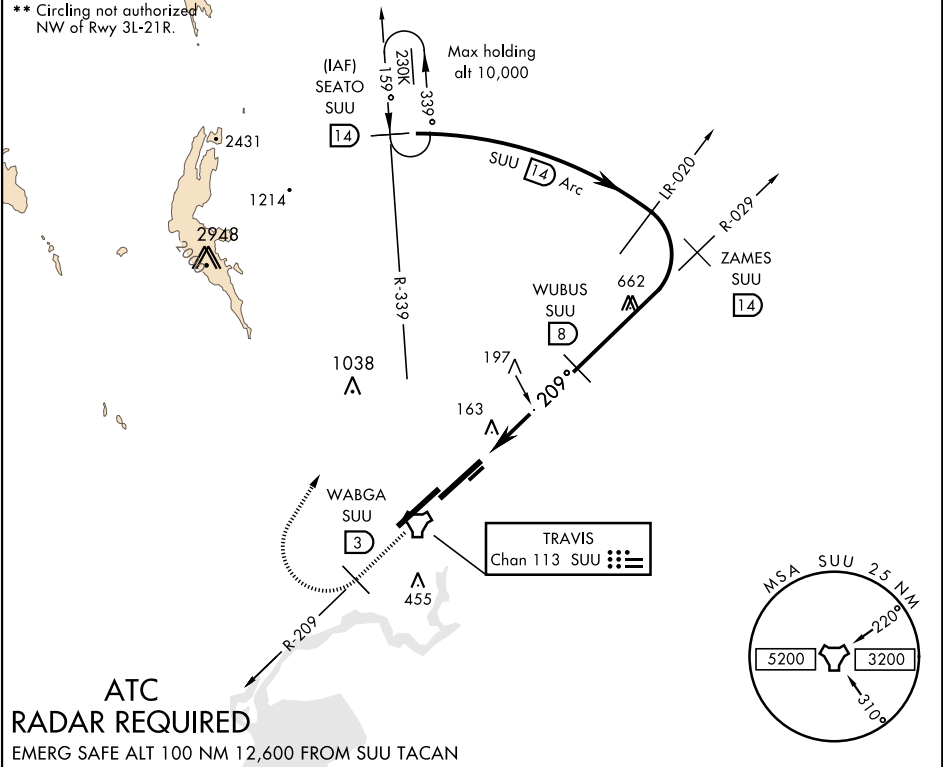
▼ * When ALS inop, increase CAT A RVR to 55 and vis to 1 mile, CAT B RVR to 60 and vis to 1¼ miles, CAT CDE vis to 2 miles.



MISSED APPROACH: Climb to 5000 via SUU TACAN R-209 to WABGA, then turn right hdg 015° to intercept SUU R-339 to SEATO and hold, continue climb in hold to 5000.

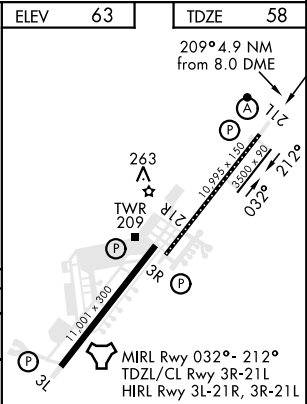
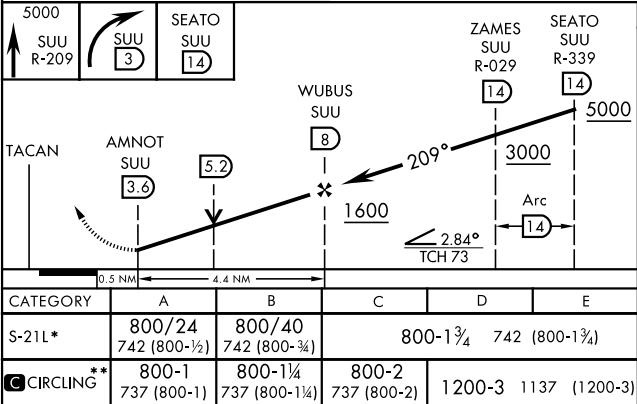
ATIS 135.55 292.125	TRAVIS APP CON 119.9(S) 126.6(N) 281.45	TRAVIS TOWER 120.75 254.4	GND CON 121.8 289.4	CLNC DEL 127.55 335.8
------------------------	--	------------------------------	------------------------	--------------------------

** Circling not authorized NW of Rwy 3L-21R.



ATC
RADAR REQUIRED

EMERG SAFE ALT 100 NM 12,600 FROM SUU TACAN



TACAN RWY 21L

SW-2, 31 DEC 2020 to 28 JAN 2021

SW-2, 31 DEC 2020 to 28 JAN 2021