

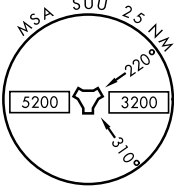
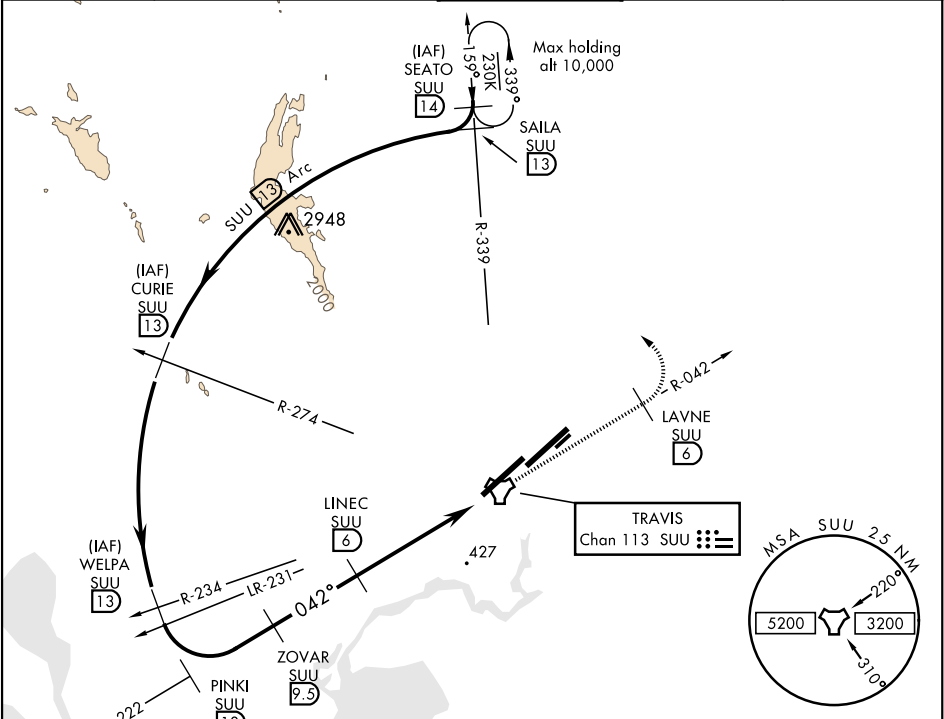
TACAN RWY 3L

TACAN SUU Chan 113	APCH CRS 042°	Rwy Idg 11,001 TDZE 34 Arpt Elev 63
-----------------------	------------------	---

AL-488 [USAF]

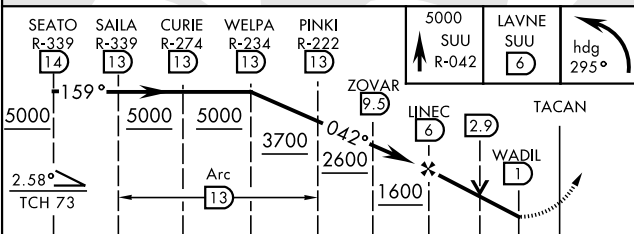
TRAVIS AFB (KSUU)

▼ *Circling not authorized NW of Rwy 3L-21R.		MISSED APPROACH: Climb to 5000 via SUU TACAN R-042 to LAVNE, then turn left via 295° course to intercept SUU R-339 to SEATO and hold, continue climb in hold to 5000.		
ATIS 135.55 292.125	TRAVIS APP CON 119.9(S) 126.6(N) 281.45	TRAVIS TOWER 120.75 254.4	GND CON 121.8 289.4	CLNC DEL 127.55 335.8

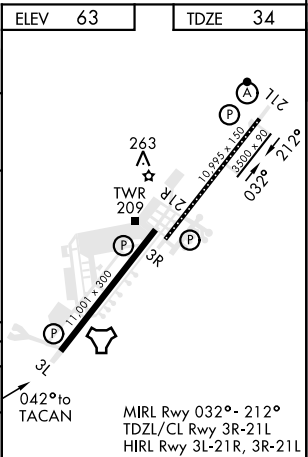


RADAR REQUIRED

EMERG SAFE ALT 100 NM 12,600 FROM SUU TACAN



CATEGORY	A	B	C	D	E
S-3L	740/55 706 (700-1)		740-2 706 (700-2)		
CIRCLING*	740-1 677 (700-1)		740-2 677 (700-2)	1200-3 1137 (1200-3)	



TACAN RWY 3L

SW-2, 31 DEC 2020 to 28 JAN 2021

SW-2, 31 DEC 2020 to 28 JAN 2021