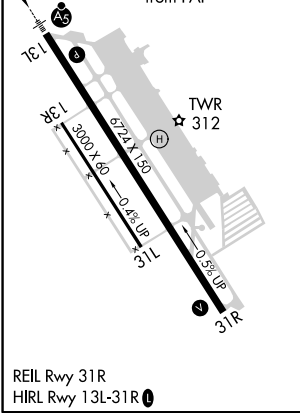
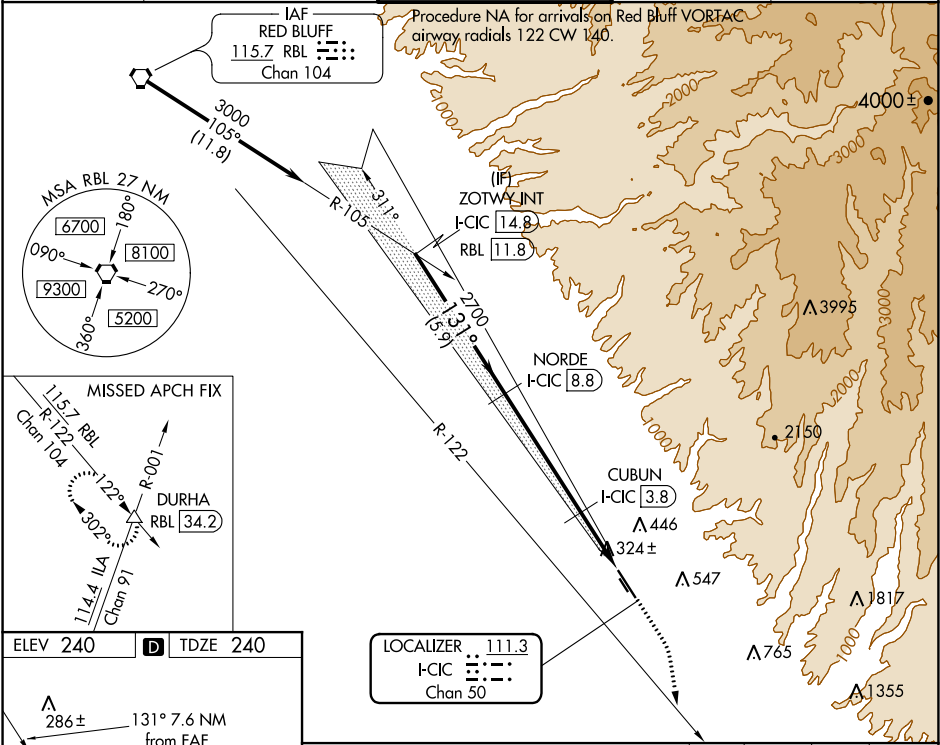


LOC/DME I-CIC 111.3 Chan 50	APP CRS 131°	Rwy Idg TDZE 240 Apt Elev 240
---	------------------------	---

ILS or LOC RWY 13L
CHICO MUNI (CIC)

DME required.	MALSR	MISSED APPROACH: Climb to 1000 then climbing right turn to 6000 on heading 155° and RBL R-122 to DURHA INT/ RBL 34.2 DME and hold, continue climb-in-hold to 6000.
Circling NA east of Rwy 13L/31R.		

ATIS 119.675	OAKLAND CENTER 132.2 350.3	CHICO TOWER ★ 121.0 (CTAF) 239.3	GND CON 121.9	UNICOM 122.95
------------------------	--------------------------------------	---	-------------------------	-------------------------



ZOTWY INT I-CIC 14.8	NORDE I-CIC 8.8	CUBUN I-CIC 3.8	DURHA
3000	2700	1000	6000
GS 3.00° TCH 52	131°	1080	RBL R-122
5.9 NM	5.1 NM	1.6 NM	0.9 NM
CATEGORY A	B	C	D
S-ILS 13L	440-1/2	200 (200-1/2)	
S-LOC 13L	580-1/2	340 (400-1/2)	
CIRCLING	640-1 400 (400-1)	700-1 460 (500-1)	700-1/2 460 (500-1/2) 800-2 560 (600-2)

SW-2, 31 DEC 2020 to 28 JAN 2021

SW-2, 31 DEC 2020 to 28 JAN 2021