

ILS or LOC RWY 30

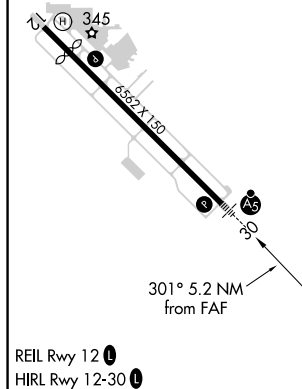
T DME from VIS VOR/DME.
A Simultaneous reception of I-VIS and VIS DME required.
For inop ALS, increase S-LOC 30 Cat C/D visibility to 1 SM.




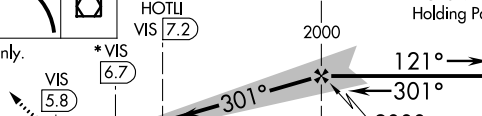

MISSED APPROACH: Climb to 1000 then climbing left turn to 3000 direct VIS VOR/DME and hold, continue climb-in-hold to 3000.

Procedure NA for arrivals at
TTE VOR/DME on V165-459
southeast bound.

TULE
109.2 TTE
Chan 29



REIL Rwy 12 **L**
HIRL Rwy 12-30 **L**

1000 ↑	3000 ↖	VIS 					
*LOC only.	*VIS VIS 5.8	*VIS VIS 6.7	2000 121° → 6000 ← 301° 2000 2000 GS 3.00° TCH 53				
CATEGORY	A		B		C		D
S-ILS 30	502-½ 207 (300-½)						
S-LOC 30	640-½ 345 (400-½)		640-5/8 345 (400-5/8)				
 CIRCLING	720-1 425 (500-1)	760-1 465 (500-1)	760-1½ 465 (500-1½)		940-2 645 (700-2)		