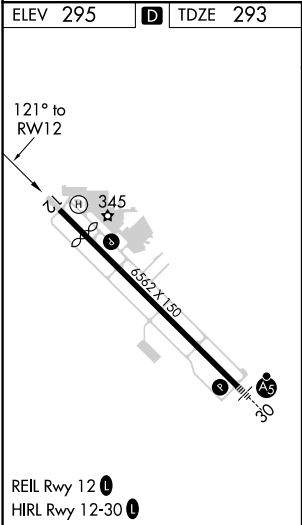
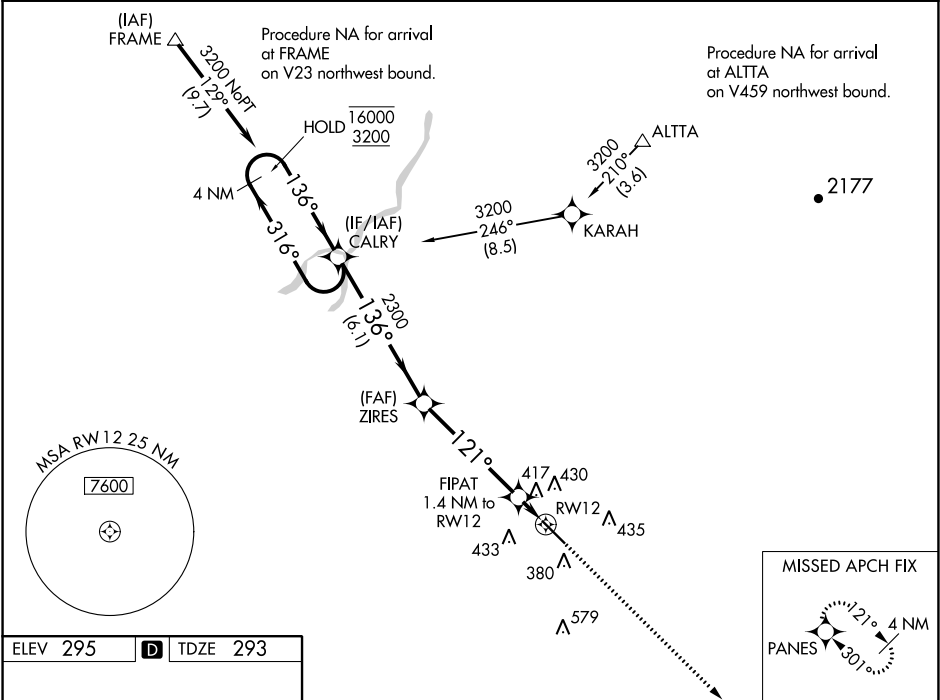


WAAS CH 82423 W12A	APP CRS 121°	Rwy Idg TDZE Apt Elev	5635 293 295
--	------------------------	-----------------------------	---

RNAV (GPS) RWY 12

VISALIA MUNI (VIS)

RNP APCH.		MISSED APPROACH: Climb to 2900 direct PANES and hold.	
▼ For uncompensated Baro-VNAV systems, LNAV/VNAV NA below -15°C or above 54°C.			
AWOS-3PT 119.925	FRESNO APP CON 118.5	CLNC DEL 118.5	UNICOM 123.05 (CTAF) 0



<div><div>4 NM Holding Pattern</div><div>CALRY</div><div>ZIRES</div><div>FIPAT 1.4 NM to RW12</div><div>RW12</div></div> <div><div>16000 3200</div><div>← 316° 136° →</div><div>136°</div><div>2300</div><div>121°</div><div>* 780</div><div>6.1 NM</div><div>4.8 NM</div><div>1.4 NM</div></div> <div><div>GP 3.00° TCH 50</div><div>2900</div><div>PANES</div><div>* LNAV only.</div></div> <div><div>VGSI and RNAV glidepath not coincident (VGSI Angle 3.00/TCH 40).</div></div>					CATEGORY		A	B	C	D
LPV DA		543-¾ 250 (300-¾)								
LNAV/ VNAV DA		697-1⅛ 404 (500-1⅛)								
LNAV MDA		680-1 387 (400-1)			680-1⅛ 387 (400-1⅛)					
CIRCLING		720-1 425 (500-1)	760-1 465 (500-1)	760-1½ 465 (500-1½)		940-2 645 (700-2)				