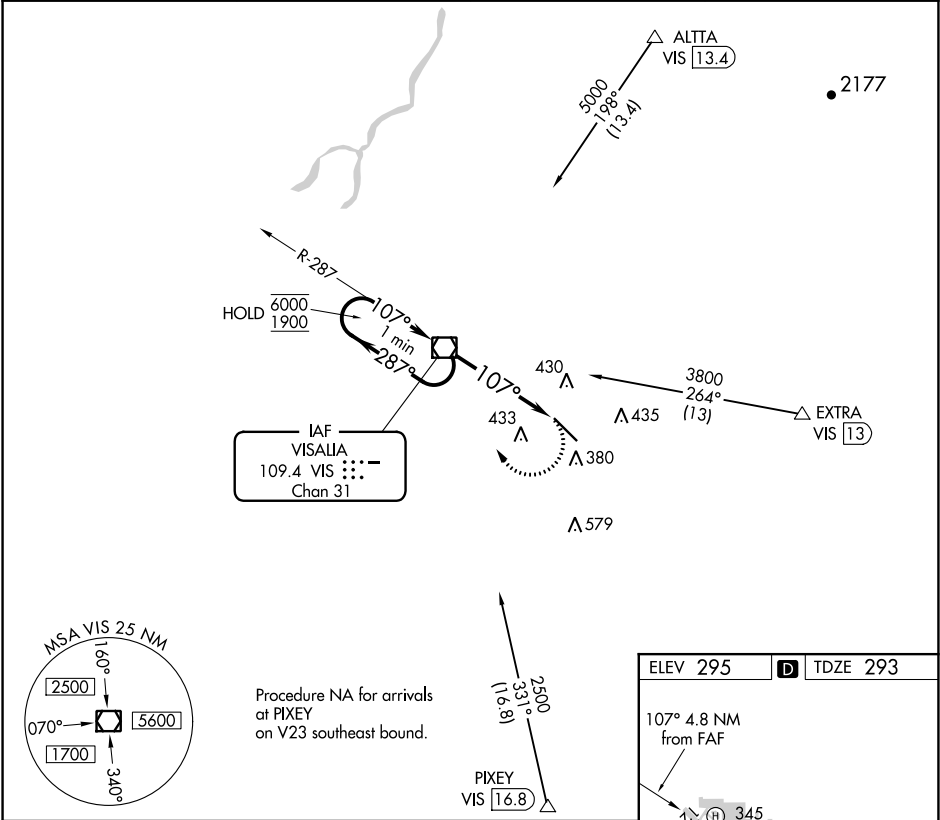


VOR/DME VIS	APP CRS	Rwy Idg	5635
109.4	107°	TDZE	293
Chan 31		Apt Elev	295

VOR RWY 12

VISALIA MUNI (VIS)

<div><div><div></div><div></div></div><div>Rwy 12 helicopter visibility reduction below ¾ SM NA.</div></div>		MISSED APPROACH: Climbing right turn to 1900 direct VIS VOR/DME and hold.	
AWOS-3PT	FRESNO APP CON	CLNC DEL	UNICOM
119.925	118.5	118.5	123.05 (CTAF) <div></div>



One Minute Holding Pattern		VIS VOR/DME		1900 VIS	
<div><div>6000</div><div>1900</div><div>← 287°</div><div>→ 107°</div></div>		<div><div>✕</div><div>107°</div><div>3.05° ≥ TCH 40</div></div>		<div><div>VIS 3.6</div><div>VIS 4.8</div><div>3.6 NM</div><div>1.3 NM</div></div>	
CATEGORY	A	B	C	D	
S-12	740-1 447 (500-1)		740-1½ 447 (500-1½)		
CIRCLING	740-1 445 (500-1)	760-1 465 (500-1)	760-1½ 465 (500-1½)		940-2 645 (700-2)

ELEV 295	TDZE 293
107° 4.8 NM from FAF	
REIL Rwy 12 <div></div>	
HIRL Rwy 12-30 <div></div>	
FAF to MAP 4.8 NM	
Knots	60 90 120 150 180
Min:Sec	4:48 3:12 2:24 1:55 1:36