

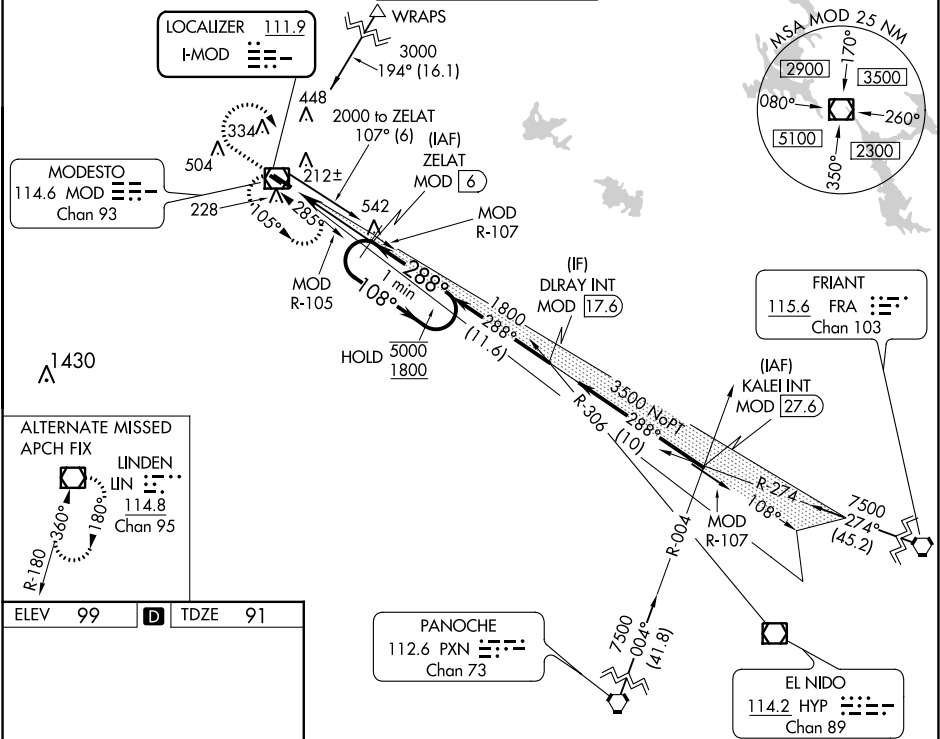
LOC I-MOD 111.9	APP CRS 288°	Rwy Idg TDZE Apt Elev	5904 91 99
---------------------------	------------------------	-----------------------------	---------------------------------------

ILS or LOC RWY 28R

MODESTO CITY-COUNTY-HARRY SHAM FIELD (MOD)

DME required for LOC only.		MALSR 	MISSED APPROACH: Climb to 1500 then climbing right turn to 2000 direct MOD VOR/DME and hold.
 Autopilot coupled approach NA below 1080. DME from MOD VOR/DME. Simultaneous reception of I-MOD and MOD DME required. For inop ALS, increase S-LOC 28R Cat C/D visibility to 1 3/8 SM.			

ATIS 127.7	NORCAL APP CON 120.95 269.45	MODESTO TOWER* 125.3 (CTAF) 257.8	GND CON 121.7	UNICOM 122.95
----------------------	--	---	-------------------------	-------------------------



ELEV 99	D	TDZE 91
REIL Rwy 10L MIRL Rwy 10R-28L HIRL Rwy 10L-28R		

1500	2000	MOD	ZELAT MOD 6	One Minute Holding Pattern
*LOC only	MOD 0.8	*MOD 2.2	1800	108° 5000 1800
GS 3.00° TCH 53				
CATEGORY	A	B	C	D
S-ILS 28R	291-1/2		200 (200-1/2)	
S-LOC 28R	580-1/2 489 (500-1/2)		580-1 489 (500-1)	
CIRCLING	580-1 481 (500-1)		600-1 501 (600-1)	
	700-1 3/4 601 (700-1 3/4)		820-2 1/4 721 (800-2 1/4)	

SW-2, 31 DEC 2020 to 28 JAN 2021

SW-2, 31 DEC 2020 to 28 JAN 2021