

WAAS CH <b>42814</b> <b>W14A</b>	APP CRS <b>141°</b>	Rwy Idg TDZE Apt Elev	<b>6007</b> <b>64</b> <b>64</b>
--	------------------------	-----------------------------	---------------------------------------

RNAV (GPS) RWY 14

YUBA COUNTY (MYV)

⚠

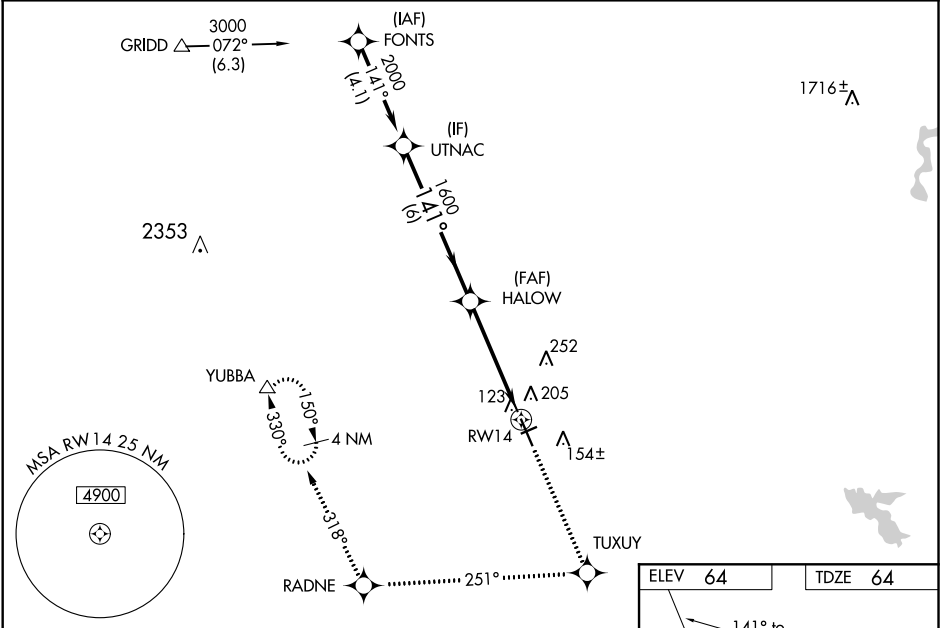
For uncompensated Baro-VNAV systems, LNAV/VNAV NA below -1.5°C (5°F) or above 54°C (130°F). DME/DME RNP-0.3 NA. Helicopter visibility reduction below ¾ SM NA. Baro-VNAV and VDP NA when using Lincoln altimeter setting. When local altimeter setting not received, use Lincoln altimeter setting and increase LPV DA to 308 feet, LNAV/VNAV DA to 514 feet and all MDA 60 feet; increase LNAV/VNAV all Cats visibility ½ mile, LNAV Cats C/D visibility ½ mile. Inop table does not apply to LPV all Cats. For inop MALSR increase LNAV Cats A/B visibility ¼ mile. Night landing: Rwy 5, 23 NA.

MALSR

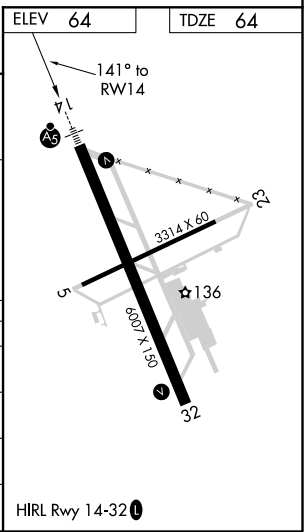
MISSED APPROACH:

Climb to 4000 direct TUXUY and via track 251° to RADNE and via track 318° to YUBBA and hold.

ASOS <b>118.475</b>	NORCAL APP CON <b>125.4 259.1</b>	UNICOM <b>123.05 (CTAF) 0</b>
------------------------	--------------------------------------	----------------------------------



UTNAC	4000	TUXUY	tr 251°	RADNE	tr 318°	YUBBA
2000	↑	✧		✧		△
Procedure Turn NA						
GP 3.00° TCH 51						
	141°	1600				
	6 NM	3.5 NM	1.1 NM			
CATEGORY	A	B	C	D		
LPV DA		264-¾	200 (200-¾)			
LNAV/VNAV DA		470-⅞	406 (500-⅞)			
LNAV MDA		500-¾	436 (500-¾)			
CIRCLING	540-1	476 (500-1)	540-1½ 476 (500-1½)	620-2 556 (600-2)		



SW-2, 31 DEC 2020 to 28 JAN 2021

SW-2, 31 DEC 2020 to 28 JAN 2021