

WAAS CH 87014 W32A	APP CRS 321°	Rwy Idg 6007 TDZE 63 Apt Elev 64
--	------------------------	---

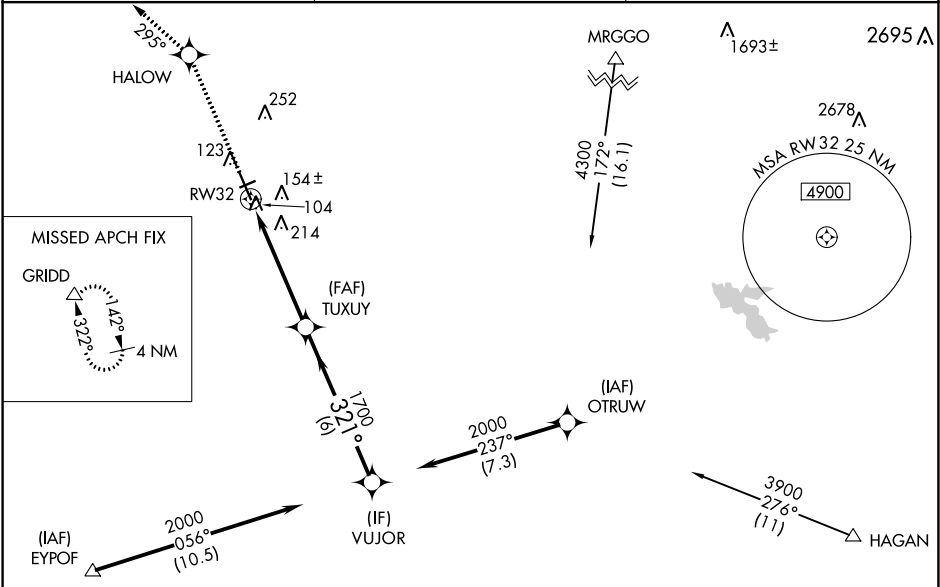
RNAV (GPS) RWY 32

YUBA COUNTY (MYV)

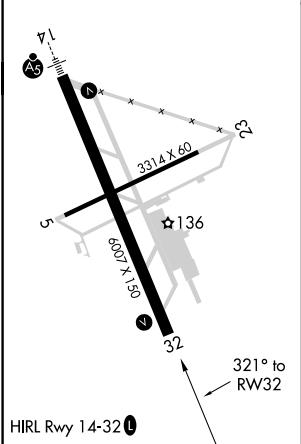
⚠ For uncompensated Baro-VNAV systems, LNAV/VNAV NA below -15°C (5°F) or above 54°C (130°F). DME/DME RNP-0.3 NA. When local altimeter setting not received, use Lincoln altimeter setting and increase LPV DA to 357 feet, LNAV/VNAV DA to 418 feet and all MDA 60 feet; increase LPV and LNAV/VNAV all Cats visibility 1/8 mile, LNAV Cats C/D visibility 1/4 mile. Night landing: Rwy 5, 23 NA. Baro-VNAV and VDP NA when using Lincoln altimeter setting.

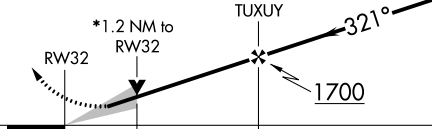
MISSED APPROACH: Climb to 4000 direct HALOW and via track 295° to GRIDD and hold.

ASOS 118.475	NORCAL APP CON 125.4 259.1	UNICOM 123.05 (CTAF) 📻
------------------------	--------------------------------------	----------------------------------



ELEV 64	TDZE 63
----------------	----------------



4000 ↑		HALOW ✧		tr 295°		GRIDD △		*LNAV only		VUJOR		Procedure Turn NA	
		*1.2 NM to RW32		TUXUY		321°		2000		GP 3.00° TCH 32			
		1.2 NM		3.8 NM		6 NM							
CATEGORY		A		B		C		D					
LPV DA		313-7/8 250 (300-7/8)											
LNAV/ VNAV DA		374-1 1/8 311 (400-1 1/8)											
LNAV MDA		480-1 417 (500-1)						480-1 1/8 417 (500-1 1/8)					
CIRCLING		540-1 476 (500-1)						540-1 1/2 476 (500-1 1/2)			620-2 556 (600-2)		

SW-2, 31 DEC 2020 to 28 JAN 2021

SW-2, 31 DEC 2020 to 28 JAN 2021