

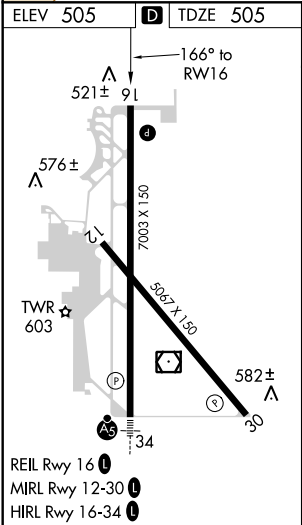
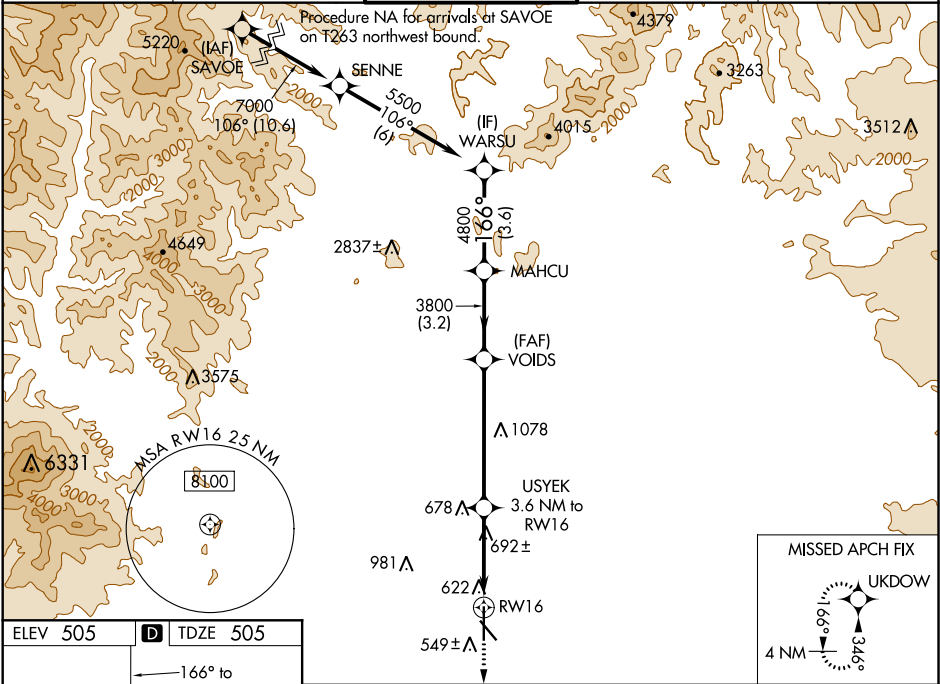
WAAS CH <b>86443</b> <b>W16A</b>	APP CRS <b>166°</b>	Rwy Idg <b>7003</b> TDZE <b>505</b> Apt Elev <b>505</b>
--	------------------------	---

RNAV (GPS) RWY 16

REDDING MUNI (RDD)

RNP APCH. ▼ Rwy 16 helicopter visibility reduction below ¾ SM NA. ▲ For uncompensated Baro-VNAV systems, LNAV/VNAV NA below -4°C or above 53°C.	MISSED APPROACH: Climb to 3000 direct UKDOW and hold.
---	---

ATIS <b>124.1</b>	OAKLAND CENTER <b>132.2 350.3</b>	REDDING TOWER ★ <b>119.8 (CTAF) 0 269.25</b>	GND CON <b>121.7</b>	UNICOM <b>122.95</b>
----------------------	--------------------------------------	---	-------------------------	-------------------------



3000 UKDOW		VGSI and RNAV glidepath not coincident (VGSI Angle 3.43/TCH 40).			
*LNAV only.		MAHCU WARSU			
*1.3 NM to RW16		USYEK 3.6 NM to RW16	VOIDS 3800	MAHCU 4800	WARSU 5500
RW16		1860*	3800	166°	GP 3.43° TCH 55
1.3 NM		2.3 NM	5.3 NM	3.2 NM	3.6 NM
CATEGORY	A	B	C	D	
LPV DA	755-¾	250 (300-¾)	775-⅞	270 (300-⅞)	
LNAV/VNAV DA	892-1½ 387 (400-1½)				
LNAV MDA	960-1	455 (500-1)	960-1⅓	455 (500-1⅓)	
CIRCLING	960-1 455 (500-1)	1000-1 495 (500-1)	1120-1¾ 615 (700-1¾)	1340-2¾ 835 (900-2¾)	