

VOR/DME RDD  
**108.4**  
Chan **21**

APP CRS  
**355°**

Rwy Idg  
TDZE **499**  
Apt Elev **505**

**7003**  
**499**  
**505**

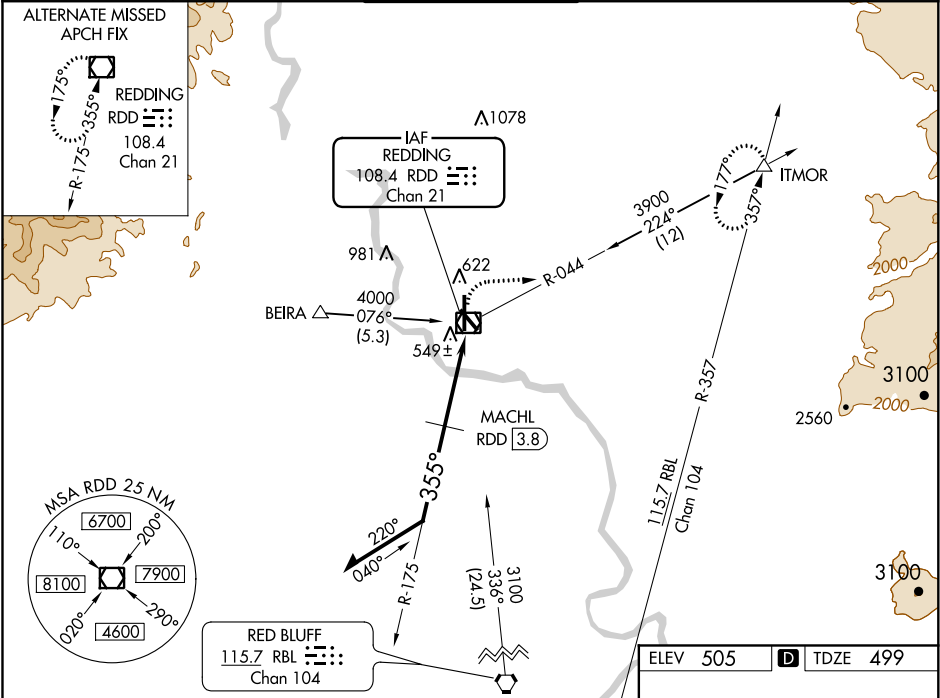
VOR RWY 34  
REDDING MUNI (RDD)

Inop table does not apply to S-34 Cats C/D.  
MACHL fix minimums: for inop ALS, increase  
S-34 Cat C/D visibility to 1¾ SM.

MALSR

MISSED APPROACH: Climb to 2100 then climbing right turn  
to 5300 on heading 090° and on RDD VOR/DME R-044 to  
ITMOR INT and hold, continue climb-in-hold to 5300.

ATIS <b>124.1</b>	OAKLAND CENTER <b>132.2 350.3</b>	REDDING TOWER ★ <b>119.8(CTAF) 0 269.25</b>	GND CON <b>121.7</b>	UNICOM <b>122.95</b>
----------------------	--------------------------------------	--	-------------------------	-------------------------



Remain  
within 10 NM

2600

175°

355°

1680

3.02°

TCH 55

1.8 NM

1.7

RDD  
VOR/DME

2100

5300

RDD  
R-044

ITMOR  
△

CATEGORY	A	B	C	D
S-34	1680-¾ 1181 (1200-¾)	1680-1 1181 (1200-1)	1680-3	1181 (1200-3)
CIRCLING	1680-1¼ 1175 (1200-1¼)	1680-1½ 1175 (1200-1½)	1680-3	1175 (1200-3)
MACHL FIX MINIMUMS				
S-34	1100-½	601 (600-½)	1100-1⅜	601 (600-1⅜)
CIRCLING	1100-1	595 (600-1)	1120-1¾ 615 (700-1¾)	1340-2¾ 835 (900-2¾)

ELEV 505

D

TDZE 499

REIL Rwy 16

MIRL Rwy 12-30

HIRL Rwy 16-34

576±

521±

582±

7003 X 150

5067 X 150

TWR  
603

AS

355° to  
VOR/DME