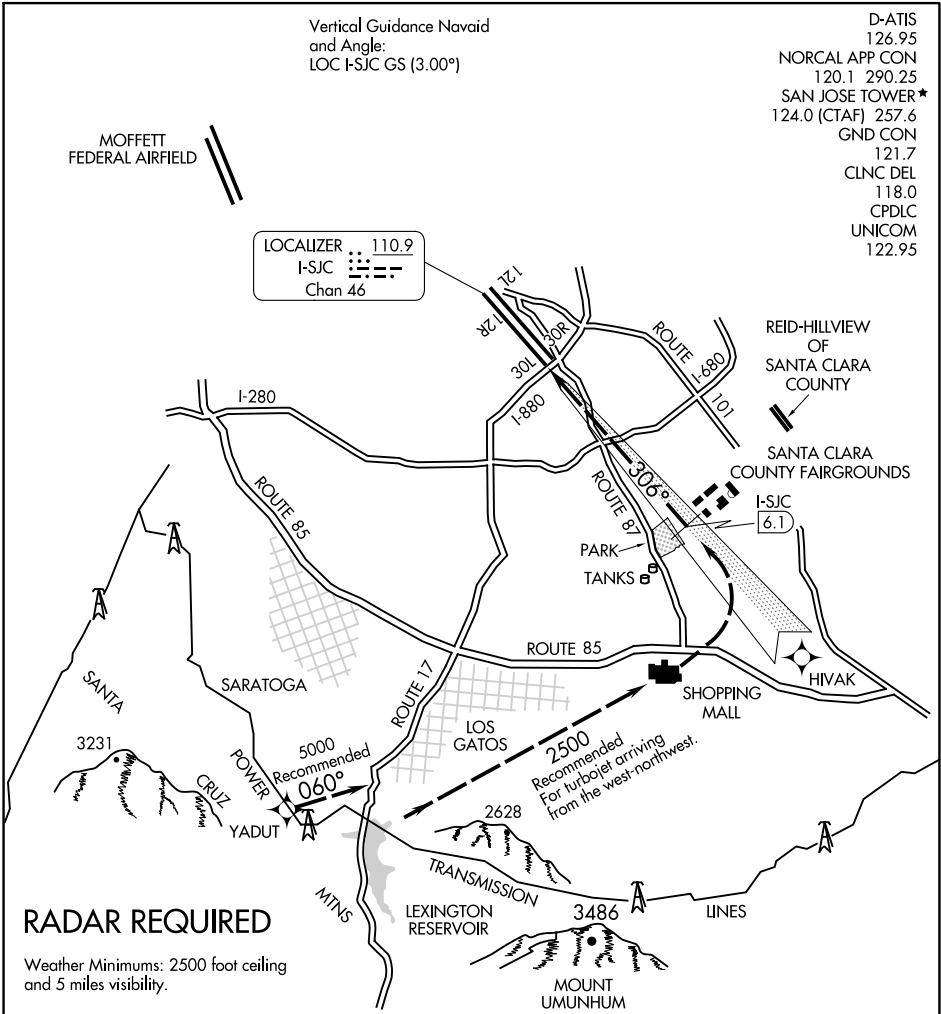


FAIRGROUNDS VISUAL RWYS 30L/R

SAN JOSE, CALIFORNIA



FAIRGROUNDS VISUAL APPROACH RUNWAYS 30L/R

When cleared for Fairgrounds Visual Approach, aircraft should turn final no closer than I-SJC 6.1 DME for noise abatement.

NOTE: Closely spaced parallel visual approaches may be in progress to Runways 30L/R. In the event of a go-around on Runway 30L, proceed straight-ahead heading 300°, or on Runway 30R, turn right heading 120°, climb and maintain 4000, or as directed by ATC.

FAIRGROUNDS VISUAL RWYS 30L/R

SAN JOSE, CALIFORNIA