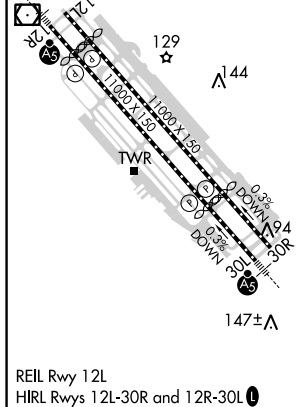
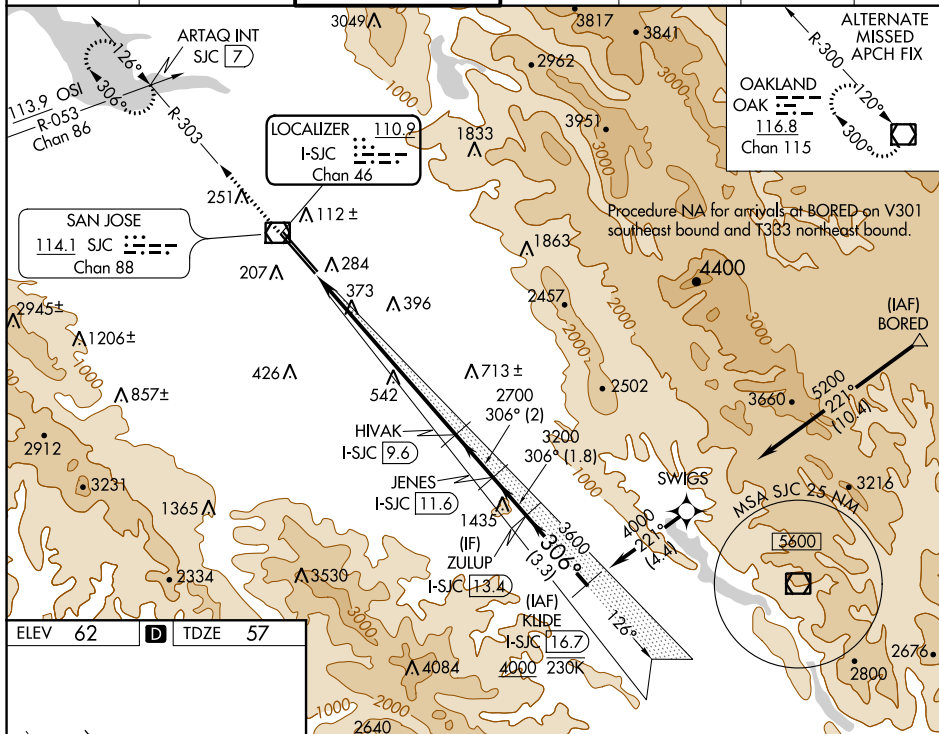


ILS RWY 30L (SA CAT I & II)  
NORMAN Y MINETA SAN JOSE INTL (SJC)

**MISSED APPROACH:** Climb to 1900 on SJC VOR/DME R-303 to ARTAQ INT/SJC 7 DME and hold.

- |                         |                                       |   |                         |                          |       |                         |
|-------------------------|---------------------------------------|---|-------------------------|--------------------------|-------|-------------------------|
| D-ATIS<br><b>126.95</b> | NORCAL APP CON<br><b>120.1 290.25</b> | SAN JOSE TOWER ★<br><b>124.0 (CTAF) 0 257.6</b> | GND CON<br><b>121.7</b> | CLNC DEL<br><b>118.0</b> | CPDLC | UNICOM<br><b>122.95</b> |
|-------------------------|---------------------------------------|---|-------------------------|--------------------------|-------|-------------------------|



1900  
↑  
SJC R-303

ARTAQ INT

VGSI and ILS glidepath not coincident  
(VGSI Angle 3.00°/TCH 70).

HIVAK  
I-SJC 9.6

JENES  
I-SJC 11.6

ZULUP  
I-SJC 13.4

KLIDE  
I-SJC 16.7

2700

3200

3600

4000

30°

GS 3.00°  
TCH 54

1109

8.1 NM

2 NM

1.8 NM

3.3 NM

CATEGORY	A	B	C	D
S-ILS 30L	SA CAT I RA 147/14 150 DA 207			
S-ILS 30L	SA CAT II RA 97/12 100 DA 157			

SA CATEGORY I & II ILS - SPECIAL AIRCREW  
AND AIRCRAFT CERTIFICATION REQUIRED

SW-2, 31 DEC 2020 to 28 JAN 2021