

LOUPE FIVE DEPARTURE

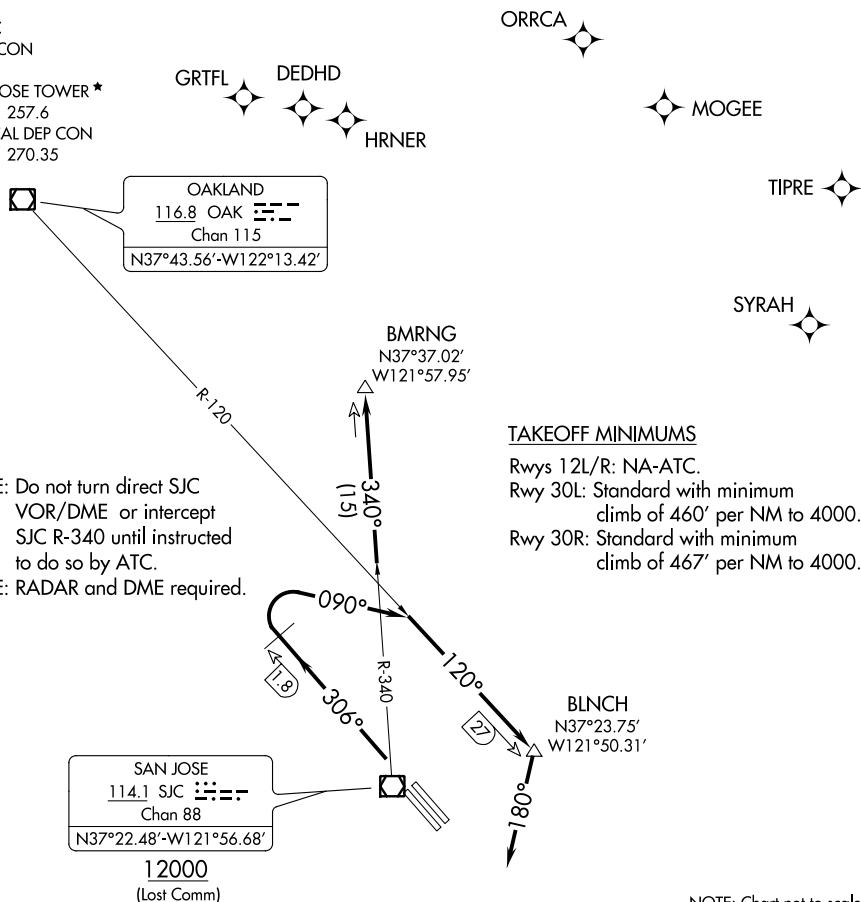
NORMAN Y MINETA SAN JOSE INTL (SJC)
SAN JOSE, CALIFORNIA

AL-693 (FAA)

SAN JOSE, CALIFORNIA

D-ATIS
126.95
CLNC DEL
118.0
CPDLC
GND CON
121.7
SAN JOSE TOWER ★
124.0 257.6
NORCAL DEP CON
121.3 270.35

TOP ALTITUDE:
5000



NOTE: Chart not to scale.



DEPARTURE ROUTE DESCRIPTION

TAKEOFF RUNWAYS 30L/R: Climb heading 306°, at SJC VOR/DME 1.8 DME northwest turn right heading 090° to intercept OAK R-120 to BLNCH, then turn right heading 180° for RADAR vectors to SJC VOR/DME, then on SJC R-340 to BMRNG INT. Maintain 5000, expect filed altitude 10 minutes after departure.

LOST COMMUNICATIONS

RUNWAYS 30L/R: If not in contact with departure control upon reaching BLNCH, depart BLNCH heading 180°. When able turn right direct SJC VOR/DME, cross SJC VOR/DME at or above 12000, then on SJC R-340 to BMRNG INT before proceeding on course.

LOUPE FIVE DEPARTURE
(LOUPE5.BMRNG) 25APR19

SAN JOSE, CALIFORNIA
NORMAN Y MINETA SAN JOSE INTL (SJC)

SW-2, 31 DEC 2020 to 28 JAN 2021