

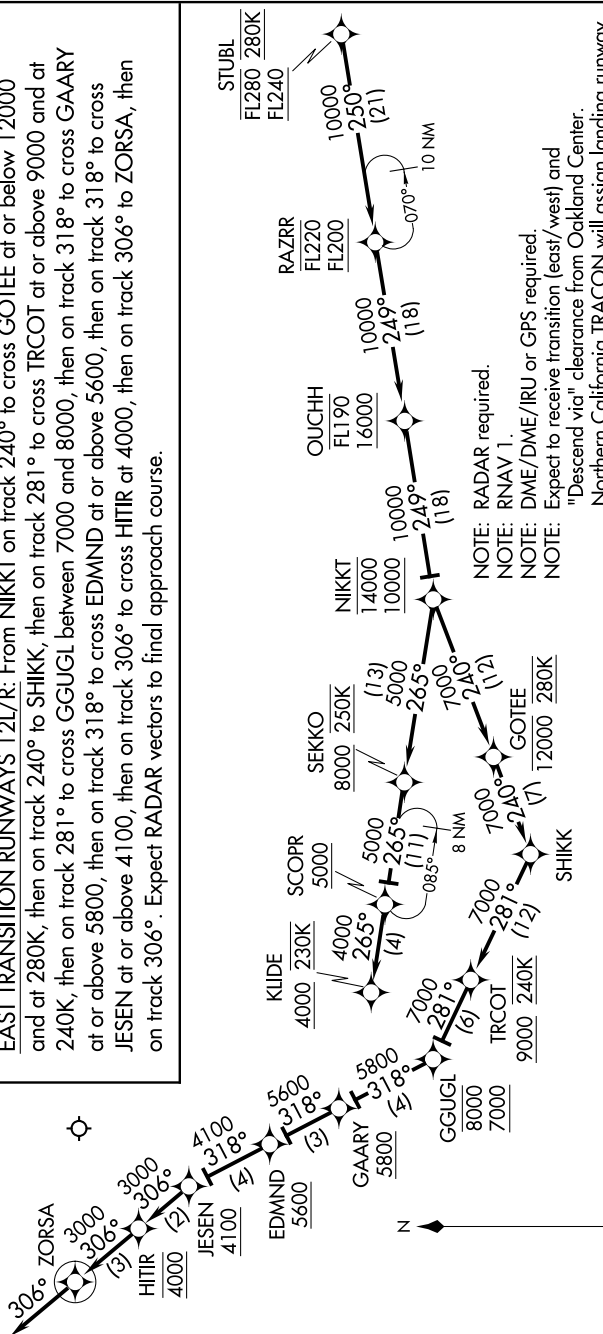
ARRIVAL ROUTE DESCRIPTION

From STUBL on track 250° to cross RAZRR between FL200 and FL220, then on track 249° to cross OUCHH between 16000 and FL190, then on track 249° to cross NIKKT between 10000 and 14000.

WEST TRANSITION RUNWAYS 30L/R: From NIKKT on track 265° to cross SEKKO at or above 8000 and at 250K, then on track 265° to cross SCOPR at or above 5000, then on track 265° to cross KLIDE at or above 4000 and at 230K. Expect assigned instrument approach procedure.

EAST TRANSITION RUNWAYS 12L/R: From NIKKT on track 240° to cross GOTEE at or below 12000 and at 280K, then on track 240° to SHIKK, then on track 281° to cross TRCOT at or above 9000 and at 240K, then on track 281° to cross GGUGL between 7000 and 8000, then on track 318° to cross GAARY at or above 5800, then on track 318° to cross EDMND at or above 5600, then on track 318° to cross JESEN at or above 4100, then on track 306° to cross HITIR at 4000, then on track 306° to ZORSA, then on track 306°. Expect RADAR vectors to final approach course.

OAKLAND CENTER
121.25 327.0
NORCAL APP CON
126.475 317.775
D-ATIS
126.95
SAN JOSE TOWER★
124.0 257.6
GND CON
121.7



NOTE: RADAR required.
NOTE: RNAV 1.
NOTE: DME/DME/IRU or GPS required.
NOTE: Expect to receive transition (east/west) and "Descend via" clearance from Oakland Center.
Northern California TRACON will assign landing runway.
NOTE: West transition indicates Rwy 30L/R.
NOTE: East transition indicates Rwy 12L/R.
NOTE: Expect west transition unless otherwise advised.