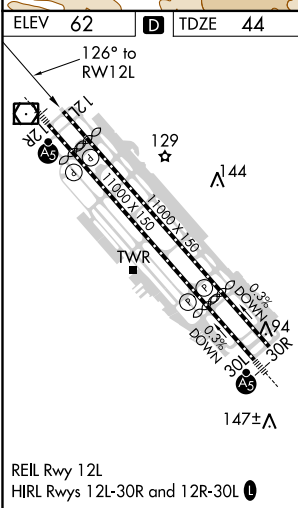
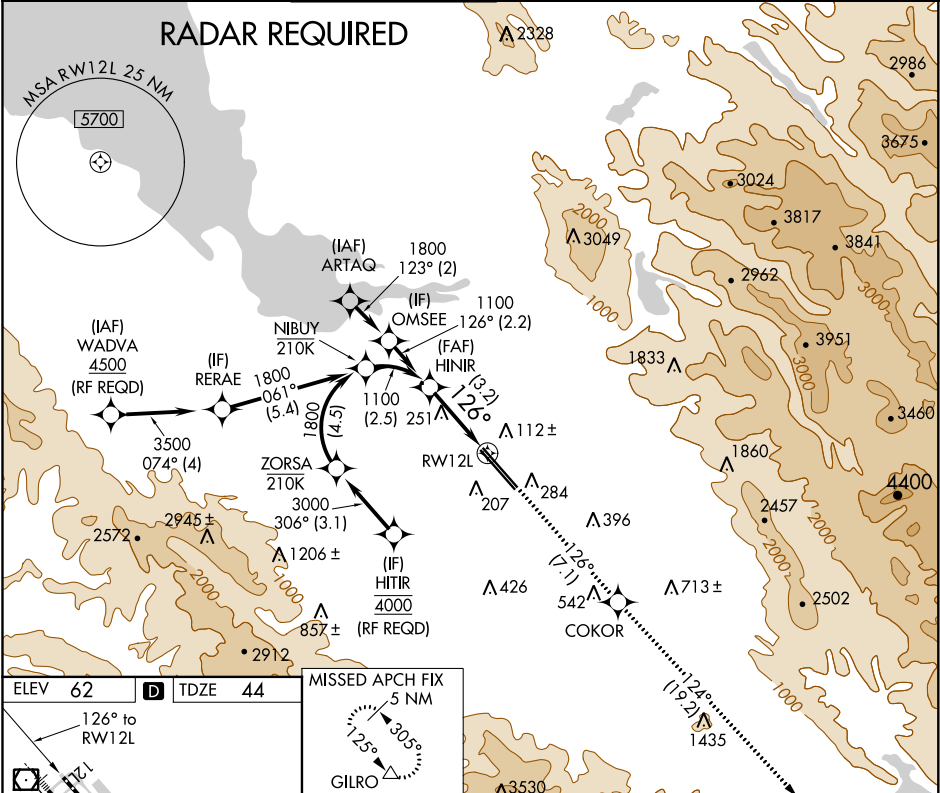


APP CRS	Rwy Idg	8831
126°	TDZE	44
	Apt Elev	62

RNAV (RNP) Z RWY 12L
NORMAN Y MINETA SAN JOSE INTL (SJC)

For uncompensated Baro-VNAV systems, procedure NA below 0°C (32°F) or above 54°C (130°F). GPS required.			MISSED APPROACH: Climb to 4600 on track 126° to COKOR and on track 124° to GILRO and hold.			
D-ATIS	NORCAL APP CON	SAN JOSE TOWER ★	GND CON	CLNC DEL	CPDLC	UNICOM
126.95	120.1 290.25	124.0 (CTAF) 257.6	121.7	118.0		122.95



MISSED APCH FIX		5 NM		
		GILRO		
HINIR		VGSI and RNAV glidepath not coincident (VGSI Angle 3.00/TCH 70).		
1100		4600		
		COKOR		
GP 3.00°		tr 124°		
TCH 57		GILRO		
See planview for multiple IF locations.				
3.2 NM		RWY 12L		
CATEGORY	A	B	C	D
RNP 0.18 DA	385-1½		341 (400-1½)	
RNP 0.30 DA	451-1¾		407 (400-1¾)	
AUTHORIZATION REQUIRED				

SW-2, 31 DEC 2020 to 28 JAN 2021

SW-2, 31 DEC 2020 to 28 JAN 2021