
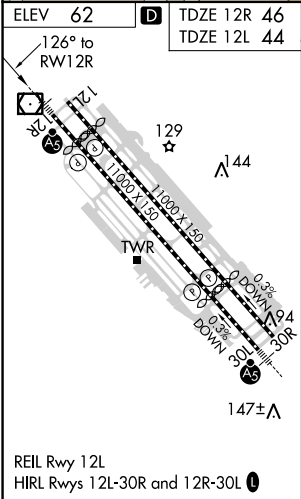
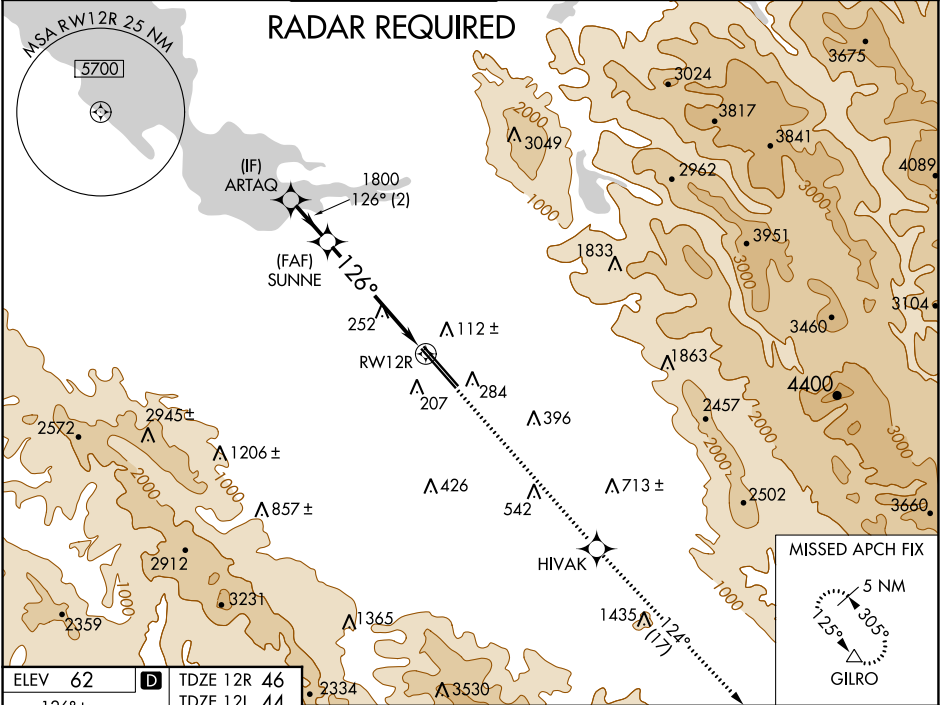


WAAS CH <b>90106</b> <b>W12A</b>	APP CRS <b>126°</b>	12R Rwy ldg <b>8587</b> TDZE <b>46</b> Apt Elev <b>62</b>	12L <b>8831</b> <b>44</b> <b>62</b>
--	------------------------	--	--

**RNAV (GPS) Y RWY 12R**  
NORMAN Y MINETA SAN JOSE INTL (SJC)

▼	For uncompensated Baro-VNAV systems, LNAV/VNAV NA below -1°C (31°F) or above 54°C (130°F). DME/DME RNP-0.3 NA. For inoperative MALSR, increase LNAV/VNAV all Cats visibility to 1 mile and LNAV Cats C/D visibility to 1½ mile.			MALSR Rwy 12R		MISSED APPROACH: Climb to 4600 direct H1WAK and on track 124° to GILRO and hold.	
							
D-ATIS 126.95	NORCAL APP CON 120.1 290.25		SAN JOSE TOWER ★ 124.0 (CTAF) 0 257.6	GND CON 121.7	CLNC DEL 118.0	CPDLC	UNICOM 122.95



VGSI and RNAV glidepath not coincident (VGSI Angle 3.00/TCH 75).		4600 ↑		HIVAK ✦		tr 124°		GILRO △	
ARTAQ		SUNNE		*LNAV only					
1800		1800		*1.3 NM to RW12R					
GP 3.00° TCH 58		126°		RW12R					
2 NM		4.1 NM		1.3 NM					
CATEGORY	A		B		C		D		
LPV DA	246-½ 200 (200-½)								
LNAV/ VNAV DA	371-5/8 325 (400-5/8)		371-1 325 (400-1)						
LNAV MDA	520-½ 474 (500-½)				520-1 474 (500-1)				
SIDESTEP 12L	520-1 476 (500-1)				520-1½ 476 (500-1½)		520-2 476 (500-2)		