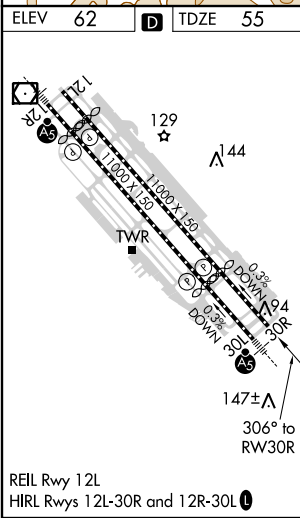
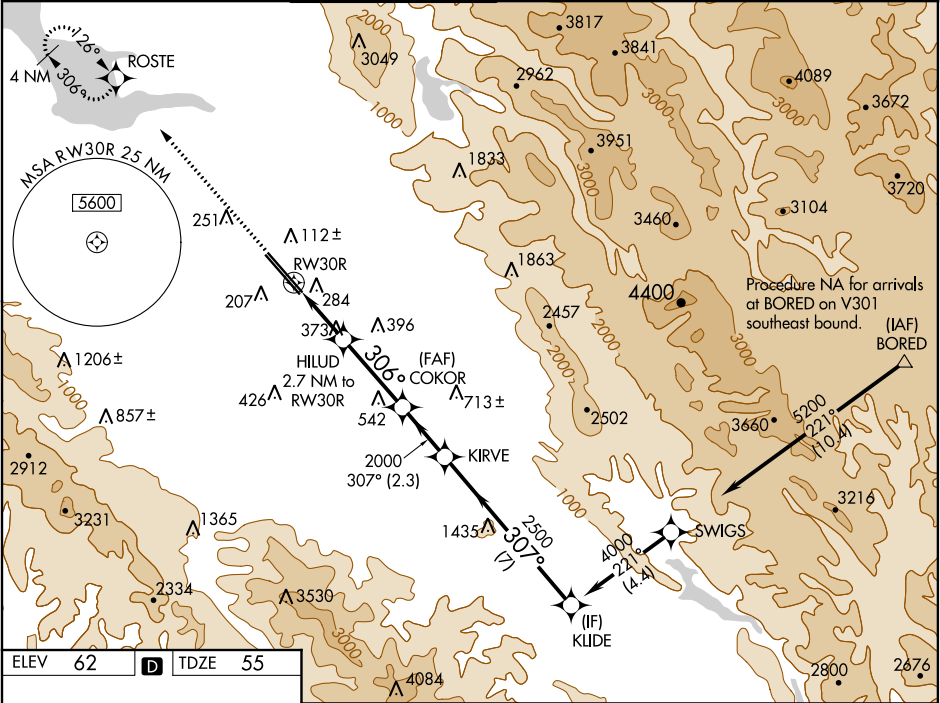


WAAS CH 72901 W30B	APP CRS 306°	Rwy Idg 7597 TDZE 55 Apt Elev 62
--	------------------------	---

RNAV (GPS) Y RWY 30R

NORMAN Y MINETA SAN JOSE INTL (SJC)

▼ For uncompensated Baro-VNAV systems, LNAV/VNAV NA below -1°C (31°F) or above 54°C (130°F). DME/DME RNP-0.3 NA.			MISSED APPROACH: Climb to 2300 direct ROSTE and hold.			
D-ATIS 126.95	NORCAL APP CON 120.1 290.25	SAN JOSE TOWER ★ 124.0 (CTAF) 0 257.6	GND CON 121.7	CLNC DEL 118.0	CPDLC	UNICOM 122.95



2300 ROSTE		VGSi and RNAV glidepath not coincident (VGSi Angle 3.00/TCH 69).			
*LNAV only		HILUD 2.7 NM to RW30R			
RW30R		*1.6 NM to RW30R			
1.6 NM		1.1 NM	3.2 NM	2.3 NM	7 NM
CATEGORY	A	B	C	D	
LPV DA	255-3/4		200 (200-3/4)		
LNAV/VNAV DA	541-15/8		486 (500-15/8)		
LNAV MDA	640-1	585 (600-1)	640-13/4	585 (600-13/4)	
CIRCLING	640-1 578 (600-1)	700-1 638 (700-1)	700-13/4 638 (700-13/4)	700-2 638 (700-2)	