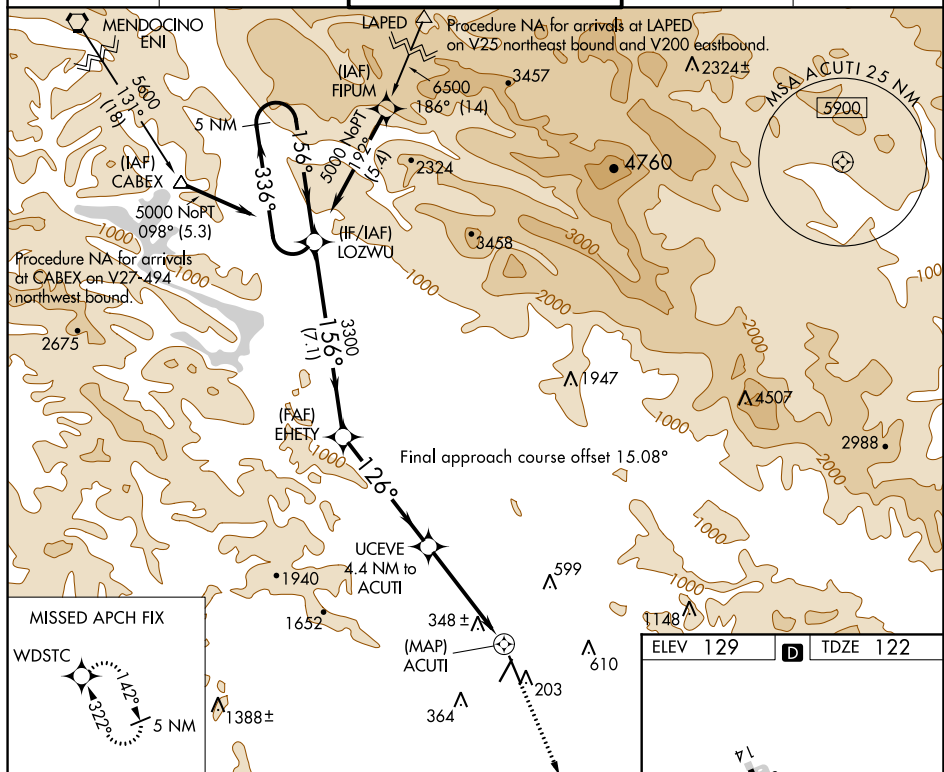


# RNAV (GPS) RWY 14

## CHARLES M SCHULZ-SONOMA COUNTY (STS)

**T**  
**A** Rwy 14 helicopter visibility reduction below  $\frac{3}{4}$  SM NA.

**MISSED APPROACH:** Climb to 5000 direct WDSTC and hold, continue climb-in-hold to 5000.

UNICOM  
122.95

5 NM Holding Pattern

LOZWU

EHETY

UCEVE  
4.4 NM to ACUTI

ACUTI  
0.9 NM to ACUTI

2.99 NM to TCH 49

5000

336°

156°


3300

126°

1700

5000

WDSO

CATEGORY	A	B	C	D
LNAV MDA	600-1	478 (500-1)	600-1 $\frac{3}{8}$	478 (500-1 $\frac{3}{8}$ )
 CIRCLING	600-1 471 (500-1)	680-1 551 (600-1)	1080-3 951 (1000-3)	1420-3 1291 (1300-3)