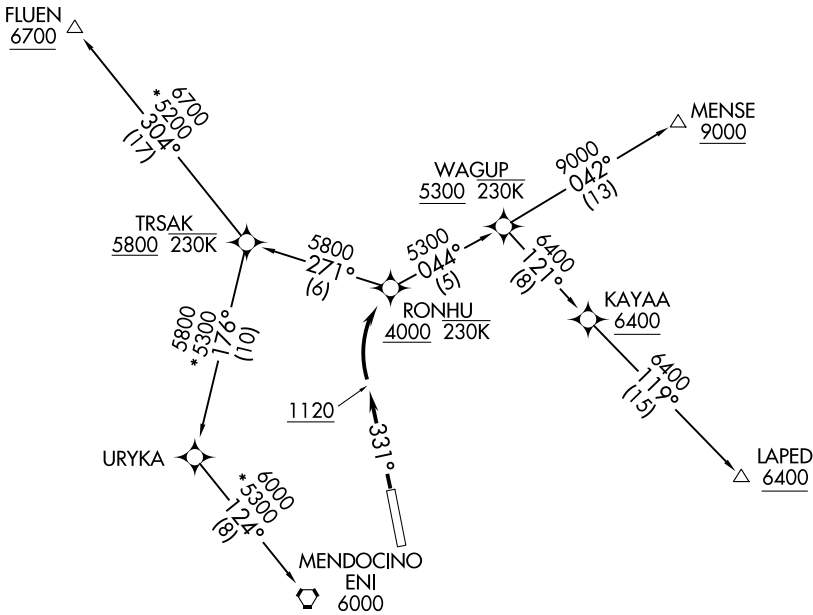


TAKEOFF MINIMUMS

Rwy 33: MENSE TRANSITION, minimum climb of 500' per NM to 1120', then minimum climb of 316' per NM to 8200.
LAPED TRANSITION, minimum climb of 500' per NM to 1120', then minimum climb of 316' per NM to 6000.
FLUEN/MENDOCINO TRANSITION, minimum climb of 500' per NM to 1120', then minimum climb of 316' per NM to 5800.

OAKLAND CENTER
127.8 353.5
CTAF
123.0



- NOTE: Do not exceed 230K until passing WAGUP.
- NOTE: Do not exceed 230K until passing TRSAK.
- NOTE: GPS required.
- NOTE: RNAV-1.

NOTE: Chart not to scale.

▼

DEPARTURE ROUTE DESCRIPTION

TAKEOFF RUNWAY 33: Climb heading 331° to 1120, then right turn direct to cross RONHU at or above 4000, thence

. . . . on assigned transition, maintain assigned altitude, expect filed altitude/flight level ten minutes after departure.

FLUEN TRANSITION (RONHU1. FLUEN)

LAPED TRANSITION (RONHU1. LAPED)

MENDOCINO TRANSITION (RONHU1. ENI)

MENSE TRANSITION (RONHU1. MENSE)