

HI-TACAN Z RWY 15

TACAN BAB Chan 23	APCH CRS 153°	Rwy ldg 12,001
		TDZE 113
		Arpt Elev 113

JAL-771 (USAF)

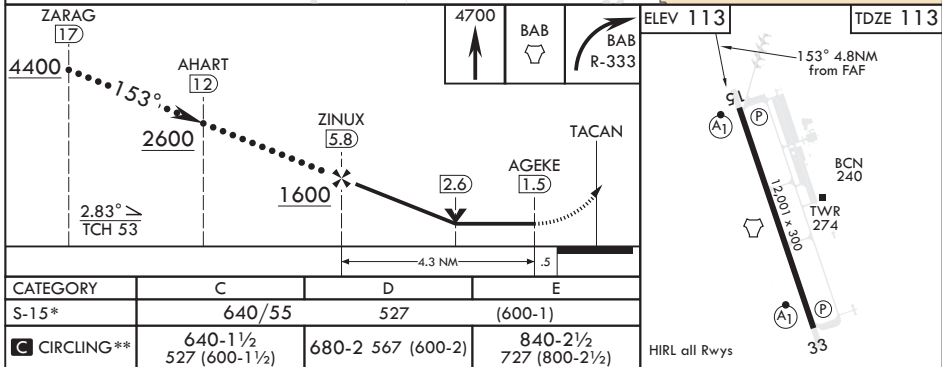
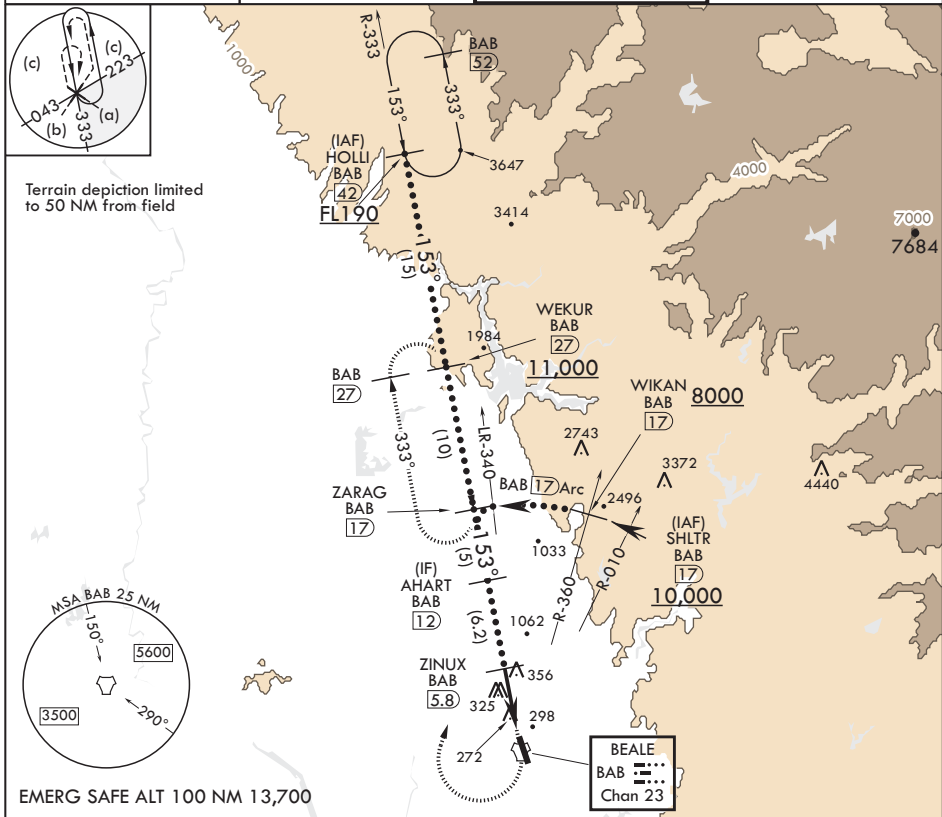
BEALE AFB (KBAB)

⚠ * When ALS inop, increase CAT CDE vis to 1 1/2 miles.
** Circling not authorized E of Rwy 15-33.



MISSED APPROACH: Climb to 4700 direct to BAB TACAN. Turn right to intercept BAB R-333 to ZARAG and hold, continue to climb in hold to 4700.

ATIS★ 124.55 273.5	NORCAL APP CON 125.4 259.1	TOWER★ 119.4 284.75	GND CON 121.6 257.75
-----------------------	-------------------------------	------------------------	-------------------------



HI-TACAN Z RWY 15