

RNAV (GPS) RWY 33

APCH CRS	Rwy Idg	12,001
325°	THRE	105
	Arpt Elev	113

AL-771 (USAF)

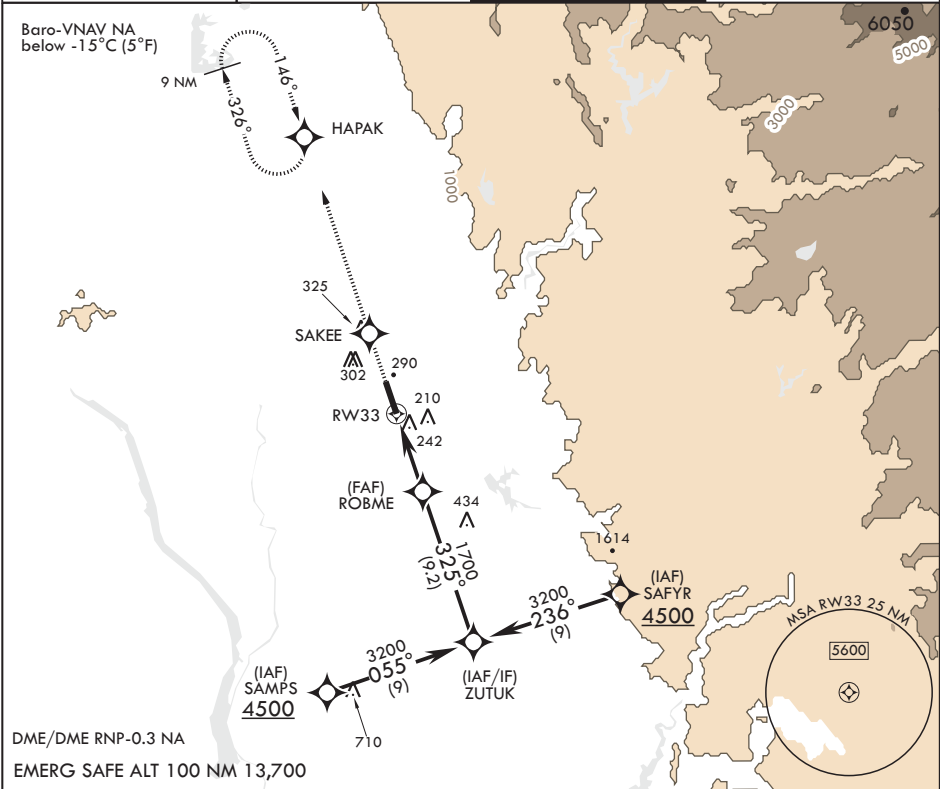
BEALE AFB (KBAB)

V * When ALS inop, increase vis to 1 7/8 miles.
** When ALS inop, increase CAT AB RVR to 55 and vis to 1 mile, CAT CD vis to 1 1/4 miles.
*** Circling not authorized E of Rwy 15-33.

ALSF-1

MISSED APPROACH: Climb direct SAKKE, then track 326° to HAPAK and hold, maintain 3600.

ATIS★ 124.55 273.5	NORCAL APP CON 125.4 259.1	TOWER★ 119.4 284.75	GND CON 121.6 257.75
-----------------------	-------------------------------	------------------------	-------------------------



3600 **SAKKE**

ELEV 113 **THRE 105**

CATEGORY	A	B	C	D
RNAV/VNAV DA*	640-1 3/4	535	(600-1 3/4)	
RNAV MDA**	540/24 435	(500-1 1/2)	540/40 435	(500-3/4)
CIRCLING***	600-1 487 (500-1)	640-1 527 (600-1)	660-1 1/2 547 (600-1 1/2)	680-2 567 (600-2)

HIRL all Rwys 325° to RW33

RNAV (GPS) RWY 33

SW-2, 31 DEC 2020 to 28 JAN 2021

SW-2, 31 DEC 2020 to 28 JAN 2021