

WAAS CH <b>50144</b> <b>W02A</b>	APP CRS <b>018°</b>	Rwy Idg TDZE <b>152</b> Apt Elev <b>163</b>
--	------------------------	---

RNAV (GPS) RWY 2

WATSONVILLE MUNI (WVI)

RNP APCH.

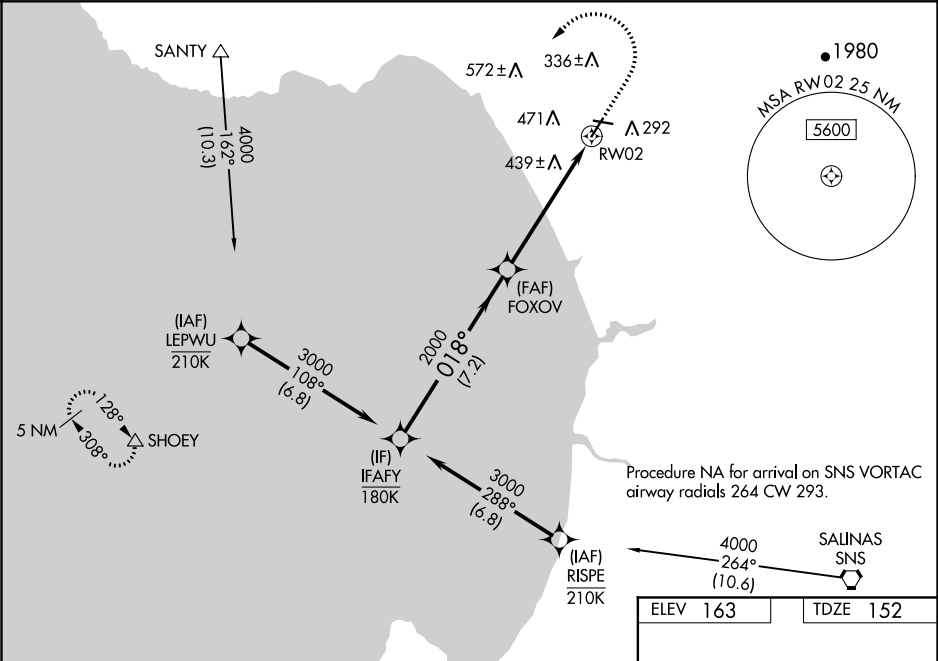
▼

⚠

Circling Rwy 27 NA at night. Rwy 2 helicopter visibility reduction below ¾ SM NA. For uncompensated Baro-VNAV systems, LNAV/VNAV NA below -2°C or above 54°C. Circling NA west of Rwy 2-20.

MISSED APPROACH: (Do not exceed 185K until SHOEY)  
Climb to 700 then climbing left turn to 6000 direct SHOEY and hold, continue climb-in-hold to 6000.

ASOS <b>132.275</b>	NORCAL APP CON <b>127.15 307.125</b>	UNICOM <b>122.8 (CTAF) 0</b>
------------------------	---	---------------------------------



IFAFY VGSI and RNAV glidepath not coincident (VGSI Angle 3.00/TCH 43).

FOXOV

SHOEY

GP 3.00° TCH 56

3000 018° 2000 2000 1.6 NM to RWY 02 \*LNAV only

7.2 NM 4.1 NM 1.6 NM

CATEGORY	A	B	C	D
LPV DA	448-7 <sup>7</sup> / <sub>8</sub> 296 (300-7 <sup>7</sup> / <sub>8</sub> )			
LNAV/VNAV DA	772-1 <sup>3</sup> / <sub>4</sub> 620 (700-1 <sup>3</sup> / <sub>4</sub> )			
LNAV MDA	700-1 548 (600-1)	700-1 <sup>5</sup> / <sub>8</sub> 548 (600-1 <sup>5</sup> / <sub>8</sub> )		
CIRCLING	700-1 537 (600-1)	700-1 <sup>5</sup> / <sub>8</sub> 537 (600-1 <sup>5</sup> / <sub>8</sub> )	1100-3 937 (1000-3)	

