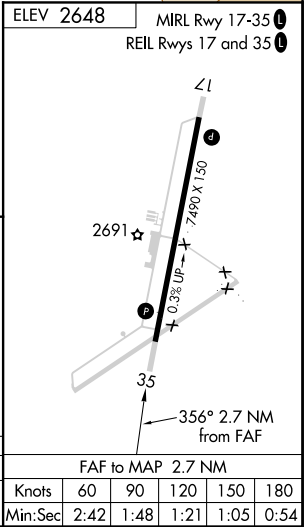
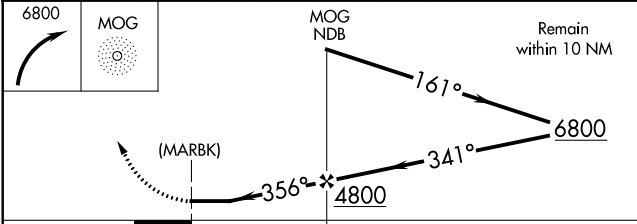
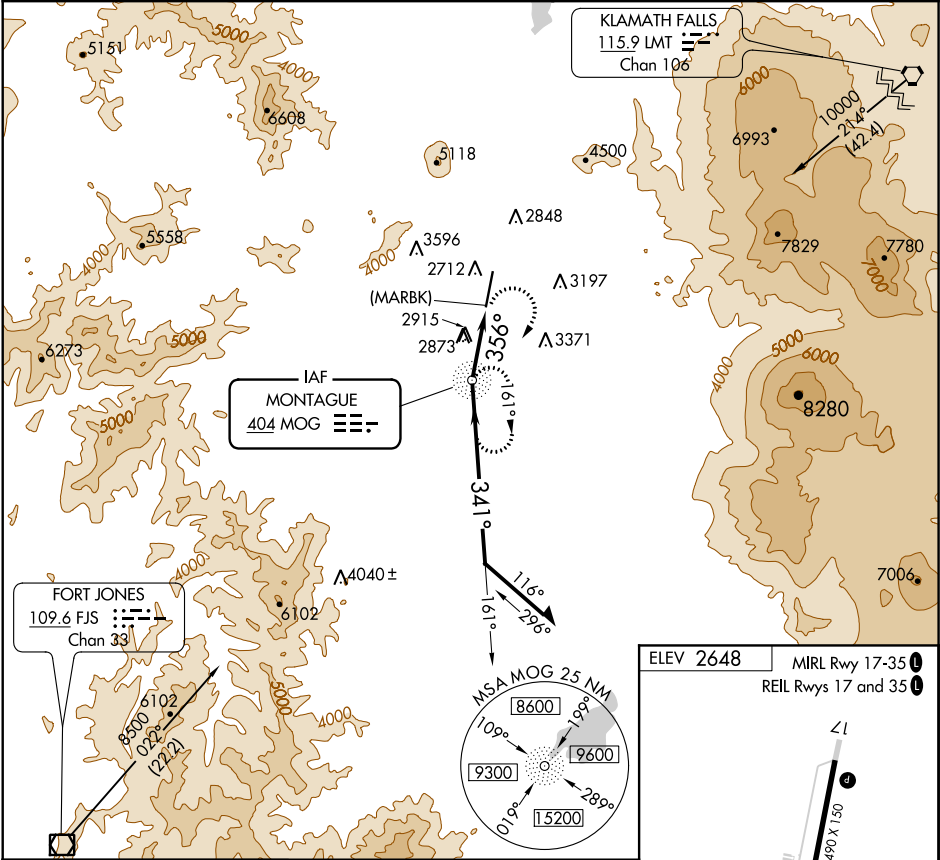


NDB MOG 404	APP CRS 356°	Rwy ldg TDZE Apt Elev N/A N/A 2648
--------------------------	------------------------	--

NDB or GPS-A
SISKIYOU COUNTY (SIY)

<p>▼ Use Siskiyou County altimeter setting; when not available, use Montague-Yreka Rohrer Field altimeter setting; when neither received, procedure not authorized.</p> <p>▲ NA</p>	MISSED APPROACH: Climbing right turn to 6800 direct MOG NDB and hold.
---	---

ASOS 121.125	SEATTLE CENTER 124.85 306.3	UNICOM 123.0 (CTAF) 0
------------------------	---------------------------------------	---------------------------------



CATEGORY	A	B	C	D	FAF to MAP 2.7 NM
CIRCLING	3760-1¼ 1112 (1200-1¼)	3760-1½ 1112 (1200-1½)	3760-3 1112 (1200-3)		Knots Min:Sec 60 2:42 90 1:48 120 1:21 150 1:05 180 0:54

SW-2, 31 DEC 2020 to 28 JAN 2021

SW-2, 31 DEC 2020 to 28 JAN 2021