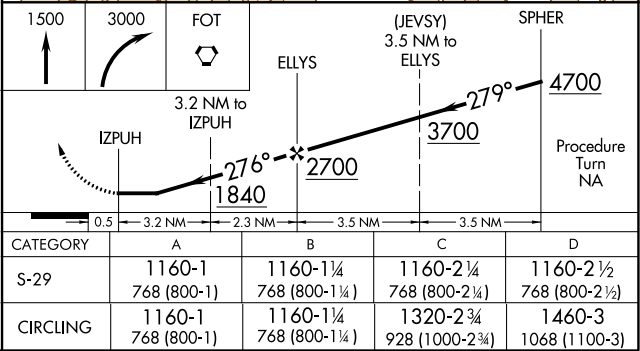
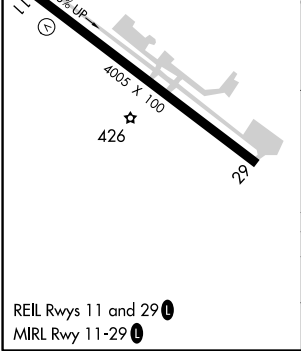
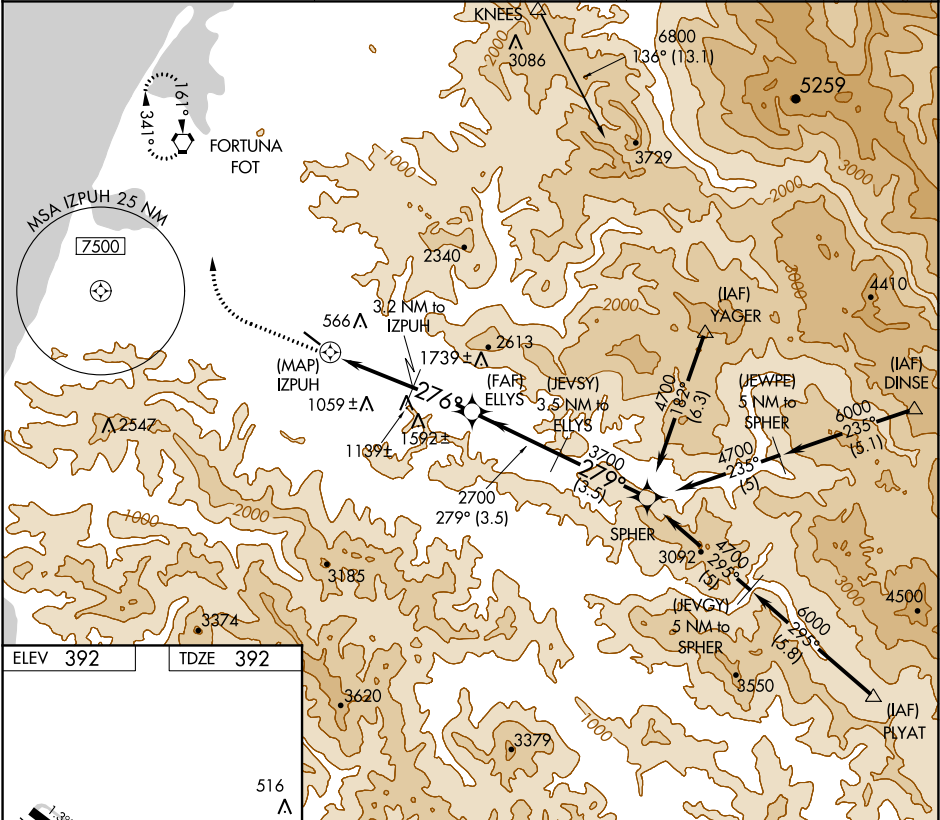


APP CRS	Rwy Idg	4005
276°	TDZE	392
	Apt Elev	392

GPS RWY 29
ROHNERVILLE (FOT)

NA	When local altimeter setting not received, use Arcata altimeter setting.	MISSED APPROACH: Climb to 1500 then climbing right turn to 3000 direct FOT VORTAC and hold.
----	--	---

AWOS-3 133.8	SEATTLE CENTER 124.85 306.3	CTAF 122.9
-----------------	--------------------------------	---------------



SW-2, 31 DEC 2020 to 28 JAN 2021

SW-2, 31 DEC 2020 to 28 JAN 2021