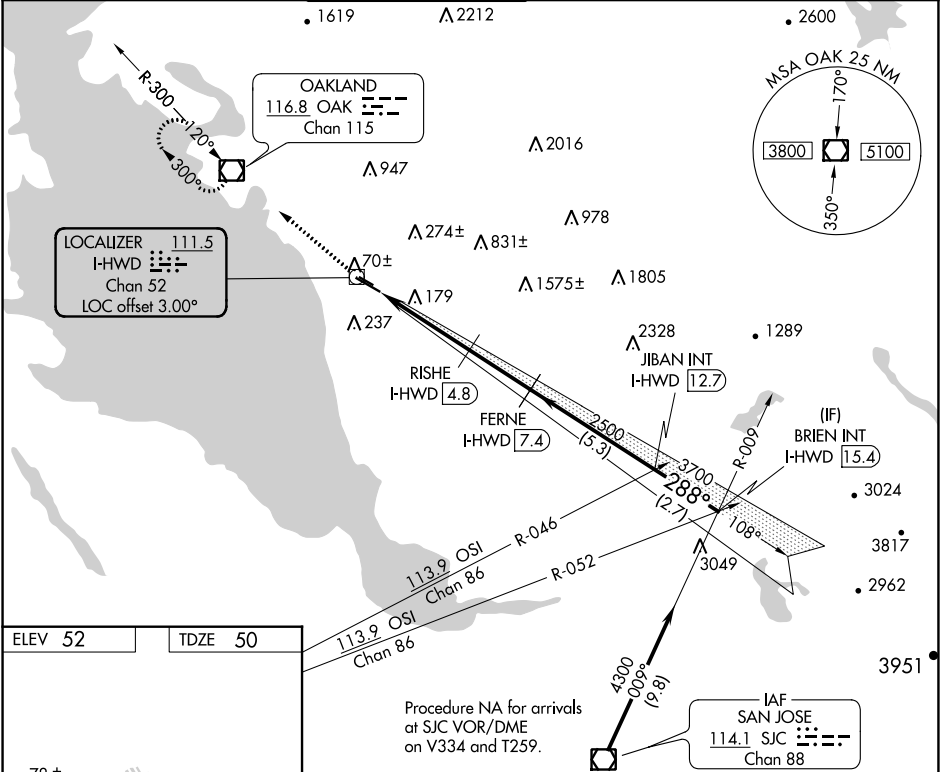


LOC/DME I-HWD 111.5 Chan 52	APP CRS 288°	Rwy Idg TDZE Apt Elev 5018 50 52
---	------------------------	--

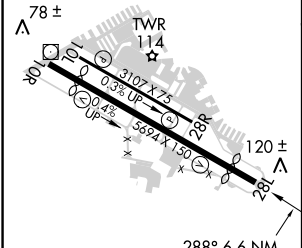
LOC/DME RWY 28L
HAYWARD EXECUTIVE (HWD)

<p>⚠ Circling NA north of Rwy 10L-28R. When local altimeter setting not received, use Oakland altimeter setting and increase all MDA 20 feet. Rwy 28L helicopter visibility reduction below ¾ SM NA.</p>	<p>MISSED APPROACH: Climb to 2100 direct OAK VOR/DME and hold.</p>
---	--

ATIS 126.7	NORCAL APP CON 124.4 351.8	HAYWARD TOWER ★ 120.2 (CTAF) 0 257.8	GND CON 121.4	CLNC DEL 128.05	UNICOM 122.95
----------------------	--------------------------------------	--	-------------------------	---------------------------	-------------------------



ELEV 52	TDZE 50
---------	---------



MRL Rwy 10R-28L
MRL Rwy 10L-28R
REIL Rwy 10R and 28L

	2100	OAK	VGSI and descent angles not coincident (VGSI Angle 4.00/TCH 35).	BRIEN INT I-HWD 15.4
				JIBAN INT I-HWD 12.7
				4300
				3700
				2500
				1560
				4 NM
				2.6 NM
				5.3 NM
				2.7 NM
CATEGORY	A	B	C	D
S-28L	500-1	450 (500-1)	500-1⅓	450 (500-1⅓)
CIRCLING	540-1	488 (500-1)	540-1½ 488 (500-1½)	620-2 568 (600-2)

SW-2, 31 DEC 2020 to 28 JAN 2021

SW-2, 31 DEC 2020 to 28 JAN 2021