

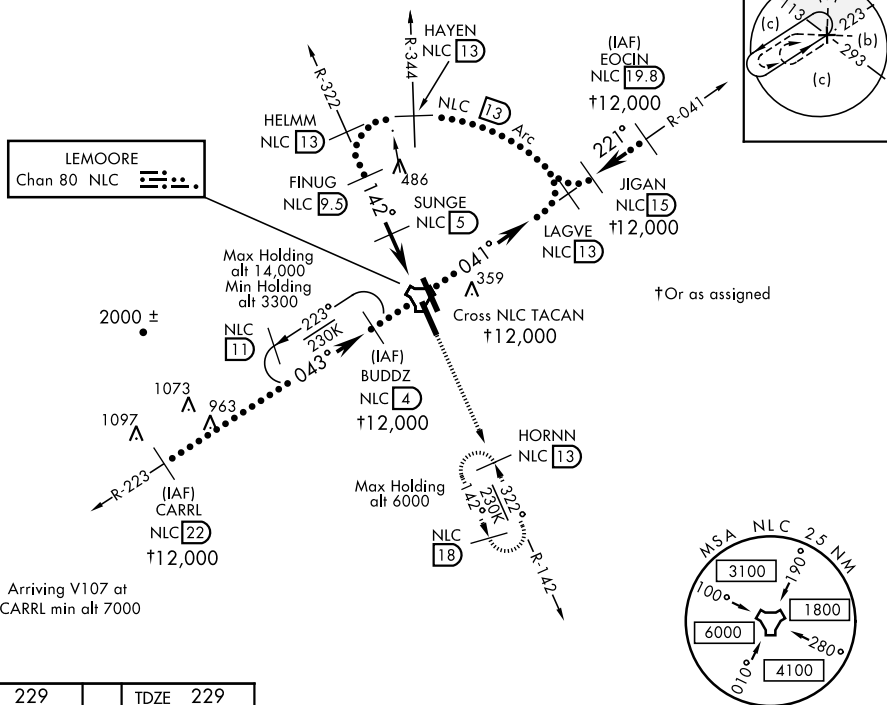
## HI-TACAN RWY 14R

TACAN NLC Chan <b>80</b>	APCH CRS <b>142°</b>	Rwy Idg <b>13,501</b> TDZE <b>229</b> Arpt Elev <b>229</b>	JAL-5067 [USN]	LEMOORE NAS (REEVES FIELD) (KNLC)
-----------------------------	-------------------------	--	----------------	-----------------------------------

**MISSED APPROACH:** Climb to 3000 via R-142 to HORNN and hold.

ATIS ★	LEMOORE APP CON	LEMOORE TOWER ★	GND CON	CLNC DEL	ASR/ PAR
121.575 327.15	N 124.1 S 118.15 269.025	128.3 360.2	121.65 305.2	124.1 371.9	

Simultaneous approaches authorized.



Arriving V107 at  
CARRL min alt 7000

ELEV 229

TDZE 229

142° to TACAN

A 257

14R

13,302 x 200

330 ☆

TWR 368

32R

13,401 x 200

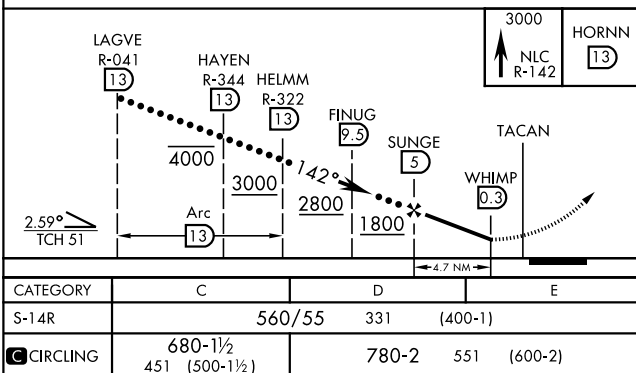
32L

TDZL Rwy 32L/CL

REIL Rwy 14L-32R, 14R-32L

HIRL Rwy 14L-32R, 14R-32L

EMERG SAFE ALT 100 NM 16,500



LEMOORE, CALIFORNIA

36° 20' N-119° 57' W

LEMOORE NAS (REEVES FIELD) (KNLC)

Amdt 5 24MAY18

## HI-TACAN RWY 14R