

RNAV (GPS) RWY 14L

WAAS Chan <b>70209</b> <b>W14A</b>	APCH CRS <b>142°</b>	Rwy Idg <b>13,502</b> TDZE <b>220</b> Arpt Elev <b>229</b>
--	-------------------------	--

AL-5067 [USN]

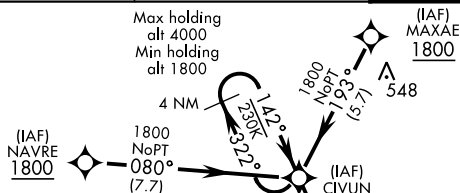
LEMOORE NAS (REEVES FIELD) (KNLC)



DME/DME RNP-0.3 NA

**MISSED APPROACH:** Climb to 1 200, then climb left turn to 2000 direct STRAT and hold.

ATIS ★	LEMOORE APP CON	LEMOORE TOWER ★	GND CON	CLNC DEL	ASR/PAR
121.575 327.15	N124.1 S118.15 269.025	128.3 340.2	121.65 305.2	124.1 371.9	



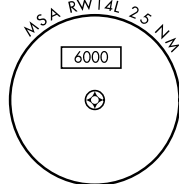
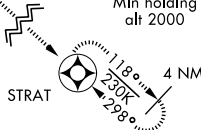
Simultaneous approaches authorized.  
LNAV procedure NA during Simultaneous operations.  
Use of FD or AP providing RNAV track guidance required  
during simultaneous operations.

For uncompensated BARO-VNAV systems, LNAV/VNAV procedure NA below -15°C (5°F) and above 54°C (130°F).



RW14L

Max holding  
alt 4000  
Min holding  
alt 2000



EMERG SAFE ALT 100 NM 16,500

Diagram illustrating the runway layout and dimensions:

- TDZL/CL Rwy 32L**
- REIL Rwy 14L-32R, 14R-32L**
- HIRL Rwy 14L-32R, 14R-32L**
- Dimensions: 13,202 x 200, 13,200 x 200
- Elevation markers: 245, 369, 330
- Bearing: 142° to RW14L

The diagram illustrates a STAR procedure for CIVUN to NAKLE. The approach is a 1800m straight approach from CIVUN to NAKLE at a 142° angle. A GP 3.00° TCH 54 is indicated. After NAKLE, the procedure continues as a 4.8 NM straight approach to RW14L, then a 1.4 NM turn to RW14L, and finally a 1.4 NM turn to RW14L. The diagram also shows a 1200m straight approach, a 2000m turn, and a STAR symbol.

LEMOORE, CALIFORNIA

36°20'N-119°57'W

LEMOORE NAS (REEVES FIELD) (KNLC)

Amdt 4 24MAY18

## RNAV (GPS) RWY 14L