

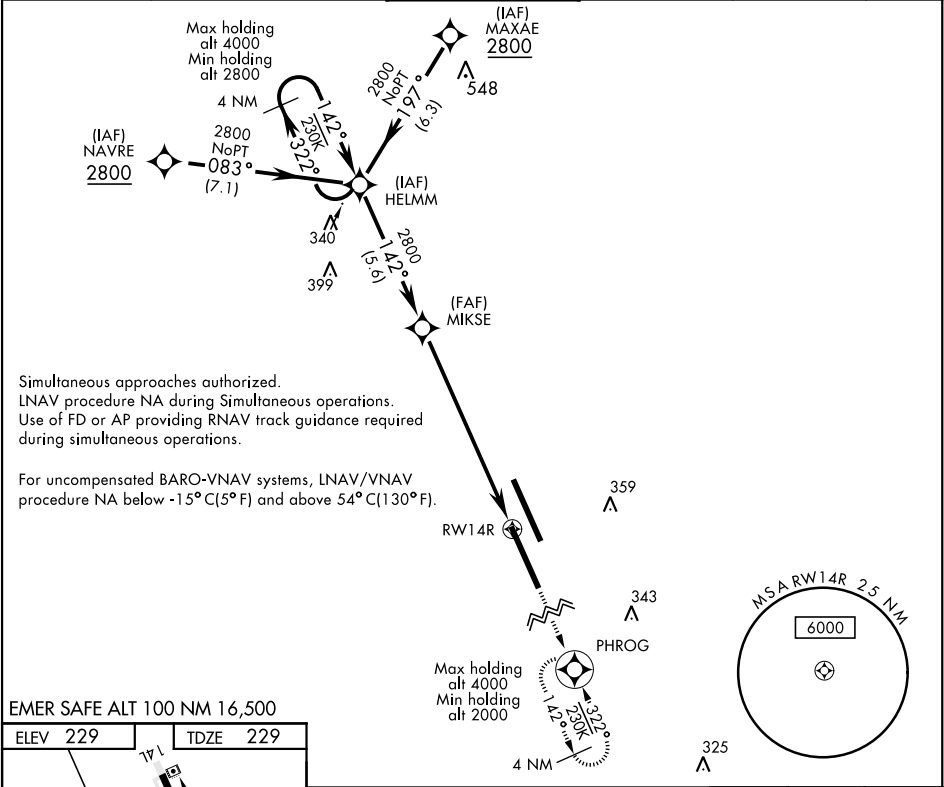
RNAV (GPS) RWY 14R

WAAS Chan 80286 W14B	APCH CRS 142°	Rwy Idg 13,501 TDZE 229 Arpt Elev 229
------------------------------------------	-------------------------	------------------------------------------------------------------

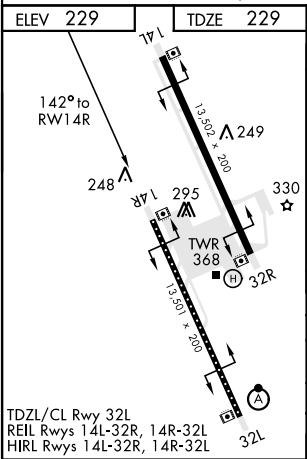
AL-5067 [USN]

LEMOORE NAS (REEVES FIELD) (KNLC)

DME/DME RNP-0.3 NA		MISSED APPROACH: Climb to 2000 direct PHROG and hold.			
ATIS ★ 121.575 327.15	LEMOORE APP CON N124.1 S118.15 269.025	LEMOORE TOWER ★ 128.3 360.2	GND CON 121.65 305.2	CLNC DEL 124.1 371.9	ASR/PAR



EMER SAFE ALT 100 NM 16,500



HELMM		MIKSE		PHROG	
2800		2800		2000	
GP 3.00°		TCH 51		↑ LNAV Only	
142°		1.2 NM to RWY 14R		7.9 NM	
CATEGORY		A	B	C	D
LPV DA		429/40	200	(200-34)	
LNAV/VNAV DA		479/40	250	(300-34)	
LNAV MDA		660/55	431 (500-1)	660-1¼ 431 (500-1¼)	
CIRCLING		680-1	451 (500-1)	680-1½ 451 (500-1½)	780-2 551 (600-2)

RNAV (GPS) RWY 14R

SW-2, 31 DEC 2020 to 28 JAN 2021

SW-2, 31 DEC 2020 to 28 JAN 2021