

## RNAV (GPS) RWY 32R

WAAS Chan <b>60335</b> <b>W32B</b>	APCH CRS <b>322°</b>	Rwy Idg <b>13,502</b> TDZE <b>222</b> Arpt Elev <b>229</b>
--	-------------------------	--

AL-5067 [USN]

LEMOORE NAS (REEVES FIELD) (KNLC)

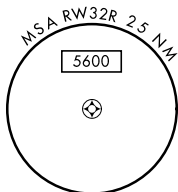
**T** DME/DME RNP-0.3 NA

**MISSED APPROACH:** Climb to 1200, then climbing right turn to 2000 direct HAYEN and hold.

ATIS ★	LEMOORE APP CON	LEMOORE TOWER ★	GND CON	CLNC DEL	ASR/PAR
121.575 327.15	124.1 5118.15 269.025	128.3 360.2	121.65 305.2	124.1 371.9	

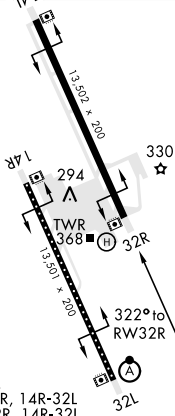
Simultaneous approaches authorized.  
LNAV procedure NA during Simultaneous operations.  
Use of FD or AP providing RNAV track guidance required  
during simultaneous operations.

For uncompensated BARO-VNAV systems, LNAV/VNAV procedure NA below -15°C (5°F) and above 54°C (130°F).

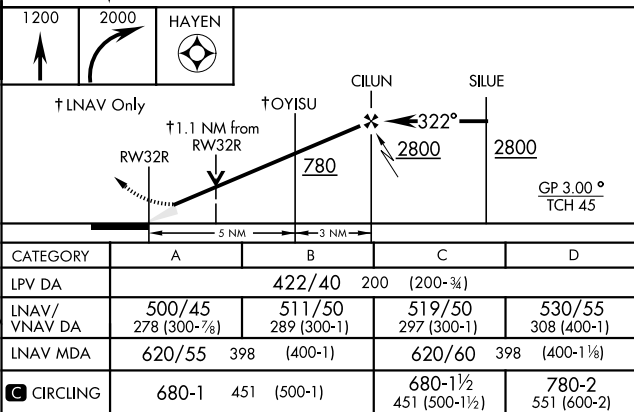
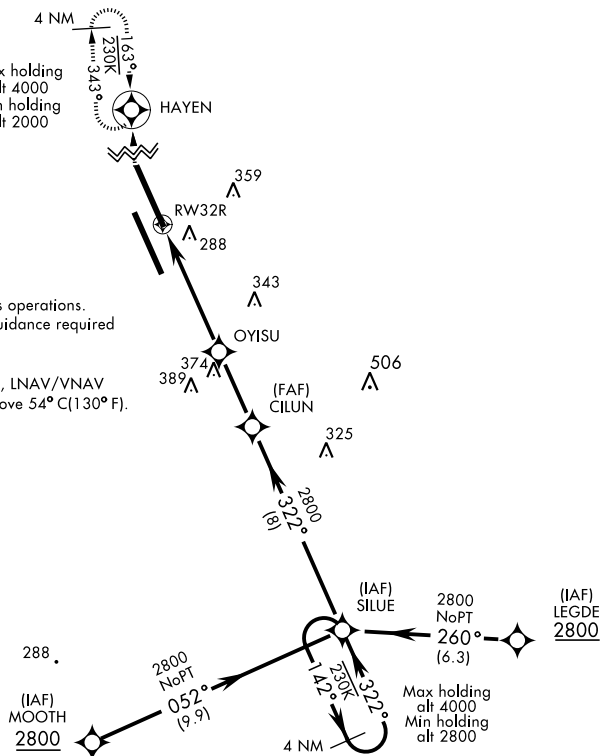


EMER SAFE ALT 100 NM 16,500

ELEV 229	,	TDZE 222
----------	---	----------



TDZL/CL Rwy 32L  
REIL Rwys 14L-32R, 14R-32L  
HIRL Rwys 14L-32R, 14R-32L



LEMOORE, CALIFORNIA

36° 20'N-19° 57'W

LEMOORE NAS (REEVES FIELD) (KNLC)

Amdt 4 24MAY18

RNAV (GPS) RWY 32R

SW-2, 31 DEC 2020 to 28 JAN 2021