

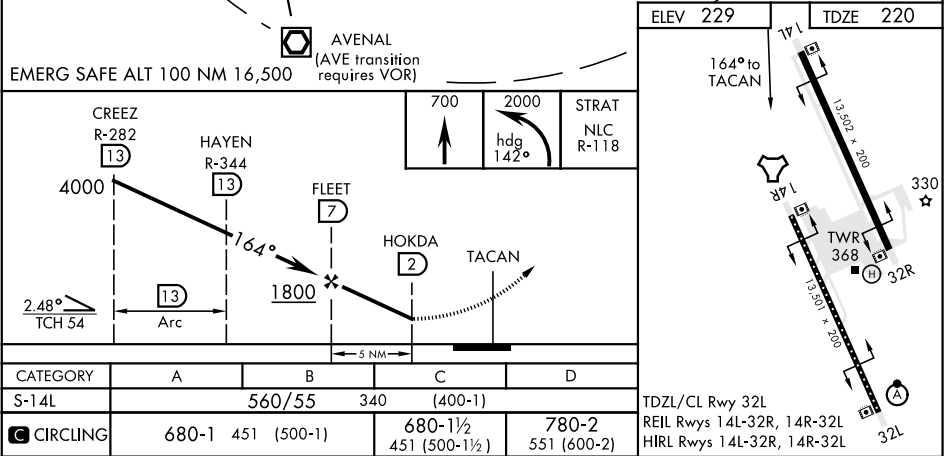
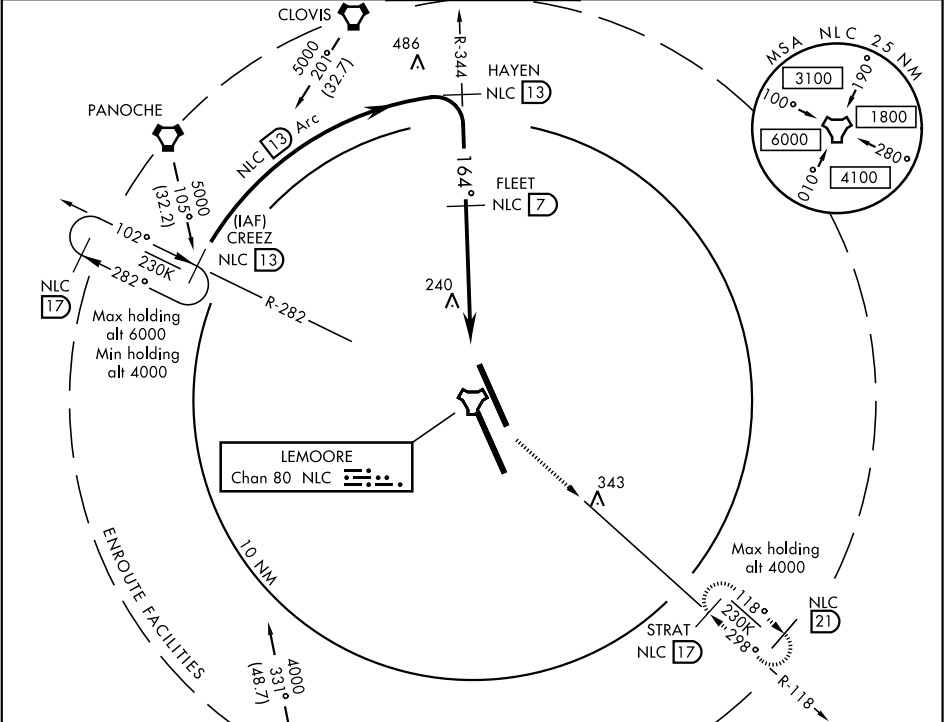
TACAN RWY 14L

TACAN	NLC	APCH CRS	Rwy ldg
Chan	80	164°	13,502
		TDZE	220
		Arprt Elev	229

AL-5067 [USN]

LEMOORE NAS (REEVES FIELD) (KNLC)

MISSED APPROACH: Climb to 700 then climbing left turn to 2000 via heading 142°, intercept NLC TACAN R-118 to STRAT and hold.					
ATIS ★	LEMOORE APP CON	LEMOORE TOWER ★	GND CON	CLNC DEL	ASR/PAR
121.575 327.15	N124.1 S118.15 269.025	128.3 340.2	121.65 305.2	124.1 371.9	



TACAN RWY 14L

SW-2, 31 DEC 2020 to 28 JAN 2021

SW-2, 31 DEC 2020 to 28 JAN 2021