

TACAN RWY 14R

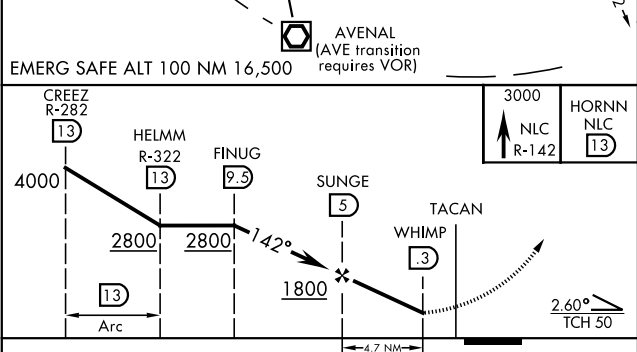
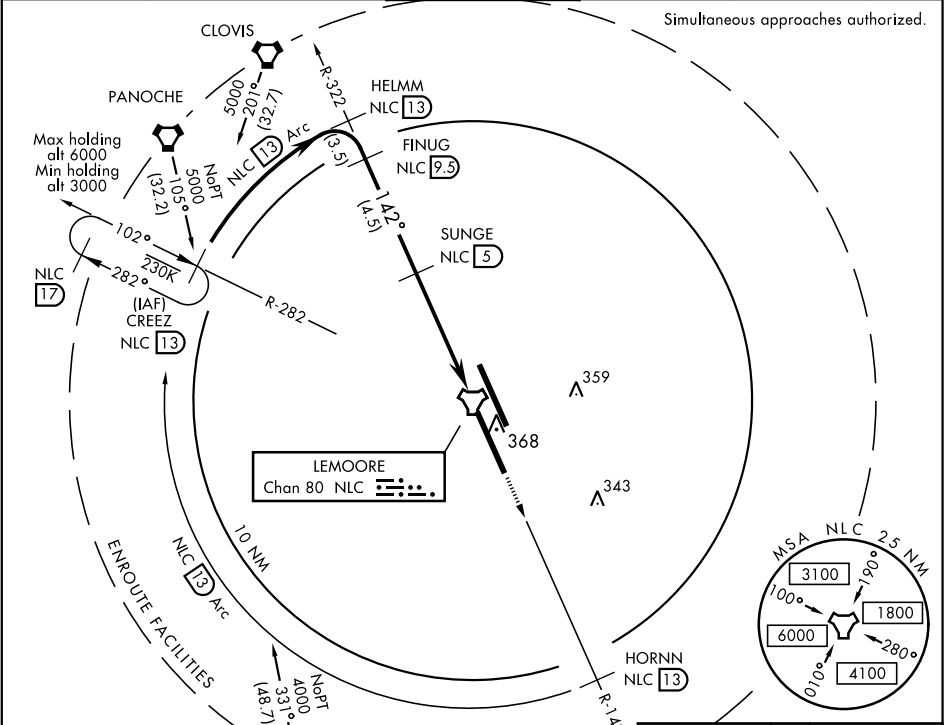
TACAN	NLC	APCH CRS	Rwy Idg
Chan	80	142°	13,501
		TDZE	229
		Arprt Elev	229

AL-5067 [USN]

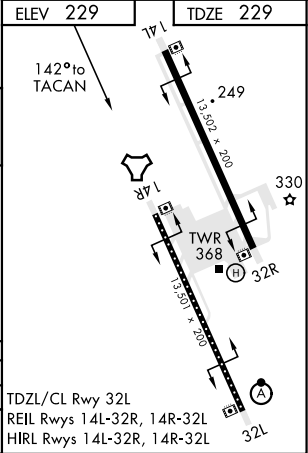
LEMOORE NAS (REEVES FIELD) (KNLC)

	MISSED APPROACH: Climb to 3000 via R-142 to HORN, then arc SW of NLC TACAN via the 13 DME Arc to CREEZ and hold.				
--	--	--	--	--	--

ATIS ★	LEMOORE APP CON	LEMOORE TOWER ★	GND CON	CLNC DEL	ASR/PAR
121.575 327.15	N124.1 S118.15 269.025	128.3 360.2	121.65 305.2	124.1 371.9	



CATEGORY	A	B	C	D
S-14R	560/55	331	(400-1)	
CIRCUING	680-1 451 (500-1)	680-1½ 451 (500-1½)	780-2 551 (600-2)	



TACAN RWY 14R

SW-2, 31 DEC 2020 to 28 JAN 2021

SW-2, 31 DEC 2020 to 28 JAN 2021