

WAAS

CH **78422**

W34A

APP CRS

344°

Rwy Idg

4125

TDZE

138

Apt Elev

141

RNAV (GPS) RWY 34

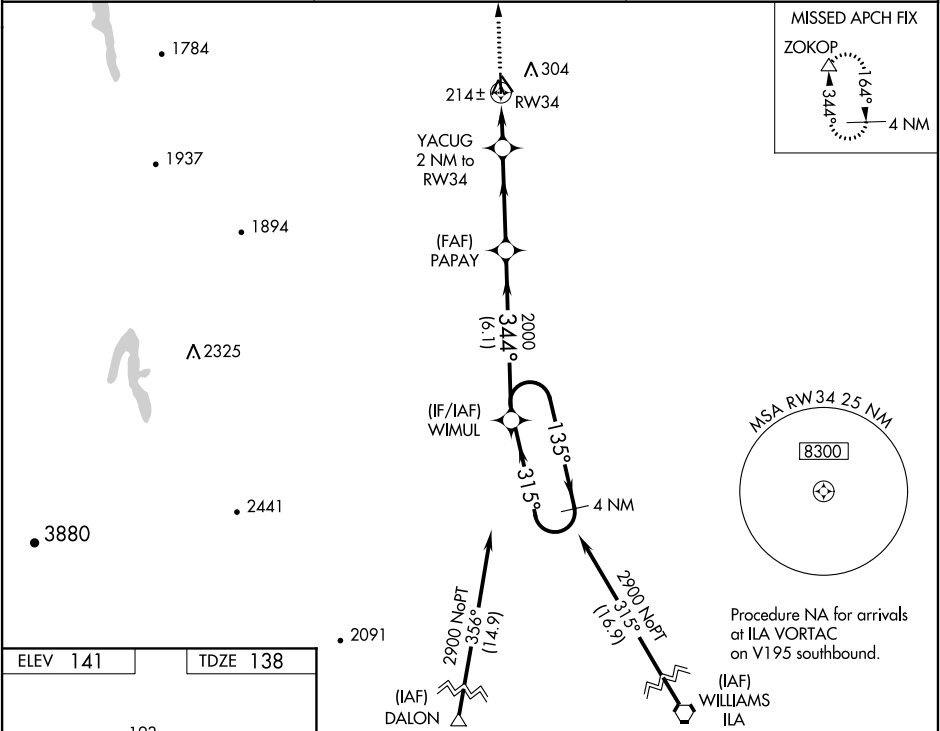
WILLOWS-GLENN COUNTY (WLW)

When Oroville Muni altimeter setting not received, procedure NA.

Baro-VNAV NA. DME/DME RNP-0.3 NA. Use Oroville altimeter setting.

MISSED APPROACH: Climb to 3000 direct ZOKOP and hold.

OVE ASOS 121.425	OAKLAND CENTER 132.2 350.3	UNICOM 122.8 (CTAF)
----------------------------	--------------------------------------	-------------------------------



ELEV 141	TDZE 138
<p>Diagram of the approach path showing the holding pattern at WIMUL, the glidepath, and the missed approach procedure. The holding pattern is a 4 NM holding pattern at 2900 feet. The glidepath is a 3.00° glidepath to RWY 34. The missed approach procedure is a climb to 3000 feet, a turn to the right, and a hold at ZOKOP.</p>	
VGSI and RNAV glidepath not coincident (VGSI Angle 3.00/TCH 31).	
*INAV only.	
MIRL Rwy 16-34	
CIRCLING	