

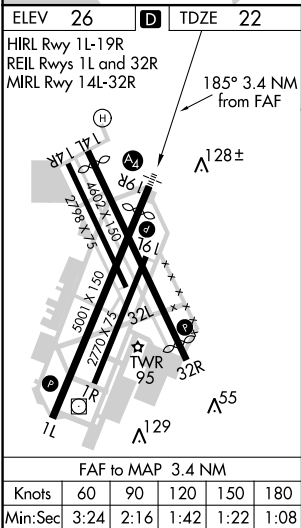
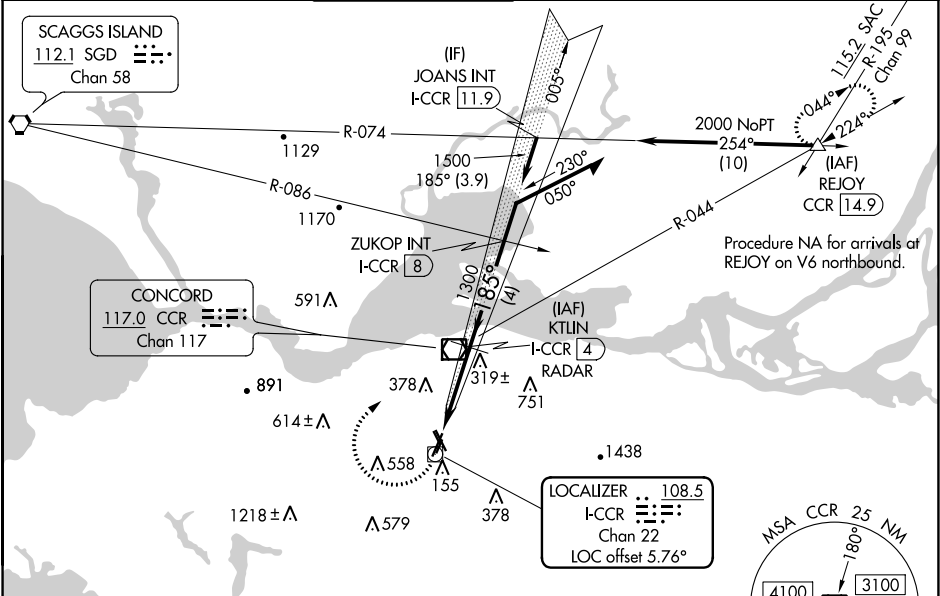
LOC/DME I-CCR <b>108.5</b> Chan 22	APP CRS <b>185°</b>	Rwy Idg TDZE Apt Elev <b>4400</b> <b>22</b> <b>26</b>
--	------------------------	--

LDA RWY 19R

BUCHANAN FIELD (CCR)

DME required. ▼ Circling NA west of Rwy 1L-19R. Circling Rwy 1L, 19L, 32R NA ▲ at night. Rwy 19R helicopter visibility reduction below ¾ SM NA. For inop ALS, increase S-19R Cats C/D visibility to 2 SM. *For inop ALS, increase S-19R Cats C/D visibility to 1½ SM.	MALS ●	MISSED APPROACH: Climbing right turn to 3000 direct CCR VOR/DME then on CCR VOR/DME R-044 to REJOY/CCR 14.9 DME and hold. *Missed approach requires minimum climb of 282 feet per NM to 1800.
---	-----------	---

ATIS <b>124.7</b>	TRAVIS APP CON <b>119.9 322.325</b>	CONCORD TOWER* <b>119.7 (CTAF) 257.8</b>	GND CON <b>121.9</b>	CLNC DEL <b>118.75</b>	UNICOM <b>122.95</b>
----------------------	--	---	-------------------------	---------------------------	-------------------------



ELEV 26	TDZE 22				
HIRL Rwy 1L-19R					
REIL Rwy 1L and 32R					
MIRL Rwy 1L-32R					
185° 3.4 NM from FAF					
3000	CCR	CCR	REJOY	KTUN	VGSI and descent angles not coincident (VGSI Angle 3.00/TCH 22).
	R-044	R-044	△	I-CCR 4	
				RADAR	
				2800	
				I-CCR 1.9	
				I-CCR 0.7	
				1300	
				1.2 NM	2.2 NM
CATEGORY	A	B	C	D	
S-19R*	440-¾ 418 (500-¾)		440-1 418 (500-1)		
S-19R	780-¾ 758 (800-¾)	780-1 758 (800-1)	780-1½ 758 (800-1½)		
● CIRCLING	780-1 754 (800-1)	780-1¼ 754 (800-1¼)	960-2¾ 934 (1000-2¾)	1300-3 1274 (1300-3)	