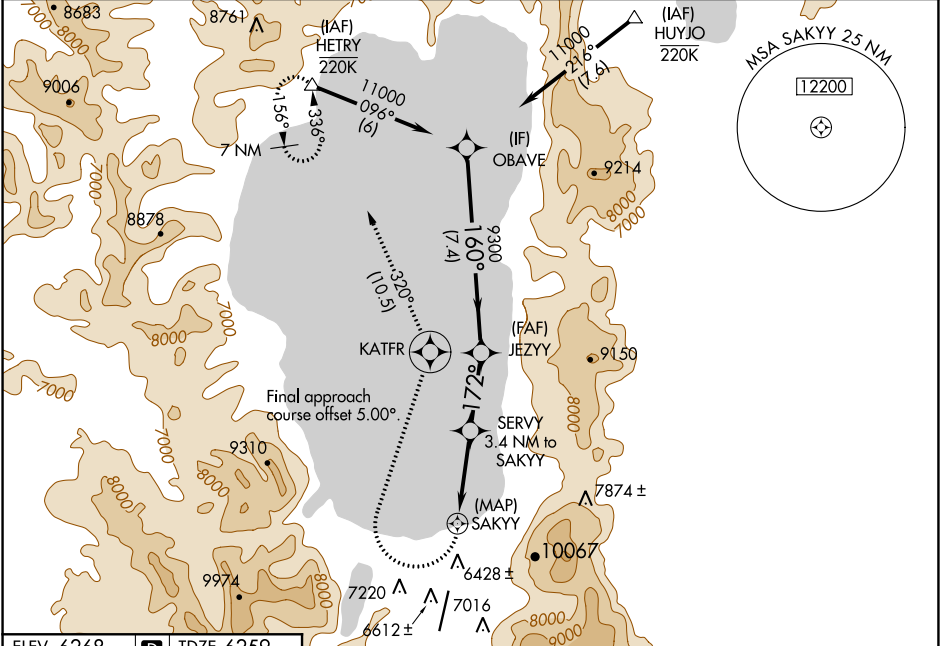


WAAS CH 57943 W18A	APP CRS 172°	Rwy Idg TDZE Apt Elev 7017 6259 6268
--	------------------------	--

RNAV (GPS) RWY 18
LAKE TAHOE (TVL)

RNP APCH.	MALSF	MISSED APPROACH: (Do not exceed 185K until KATFR). Climbing right turn to 10000 direct KATFR then on track 320° to HETRY and hold, continue climb-in-hold to 12000. * Missed approach requires minimum climb of 425 feet per NM to 10000.
▼ Circling NA at night. Rwy 18 helicopter visibility reduction below ¾ SM NA. When local altimeter setting not received, -13°C procedure NA. Circling NA east of Rwy 18-36.	25	

ASOS 124.725	OAKLAND CENTER 127.95 316.1	CLNC DEL 134.3	CTAF 122.85
------------------------	---------------------------------------	--------------------------	-----------------------



ELEV 6268	D	TDZE 6259
-----------	---	-----------

Diagram illustrating the approach path for Rwy 18, showing a 320° turn, a 172° turn, and a 160° turn. The path is marked with altitudes 10000, 9300, 8340, and 11000. Distances are indicated as 2.6 NM, 3.4 NM, 2.8 NM, and 7.4 NM. A scale bar shows 8.341 x 100 and 36.

	10000	KATFR	tr 320°	HETRY	VGSI and descent angles not coincident (VGSI Angle 3.00/TCH 48).	SERVY 3.4 NM to SAKYY	JEZYY	OBAVE				
						SAKYY	172°	160°	11000			
						8340	9300					
						2.6 NM	3.4 NM	2.8 NM	7.4 NM			
CATEGORY	A		B		C		D					
LP MDA *	6680-3 421 (500-3)											
LP MDA	7120-3 861 (900-3)			7140-3 881 (900-3)		7320-3 1061 (1100-3)						
LNAV MDA *	6980-3 721 (800-3)							7560-3 1301 (1300-3)				
LNAV MDA	7280-3 1021 (1100-3)		7620-3 1361 (1400-3)		8160-3 1901 (1900-3)		NA					
CIRCLING	7420-3 1152 (1200-3)		7680-3 1412 (1500-3)		8160-3 1892 (1900-3)		NA					

REIL Rwy 36
MIRL Rwy 18-36